

Product datasheet for PH316627

PHR1 (PLEKHB1) (NM_021200) Human Mass Spec Standard

Product data:

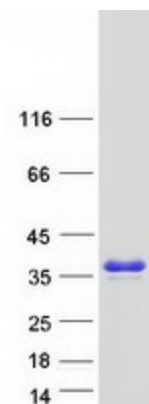
Product Type:	Mass Spec Standards
Description:	PLEKHB1 MS Standard C13 and N15-labeled recombinant protein (NP_067023)
Species:	Human
Expression Host:	HEK293
Expression cDNA Clone or AA Sequence:	RC216627
Predicted MW:	27 kDa
Protein Sequence:	>RC216627 representing NM_021200 Red=Cloning site Green=Tags(s) MSPAAPVPPDSALESPFEEMALVRGGWLWRQSSILRRWKRNFALWLDGTLGYYHDETAQDEEDRVLHFNVRDIKIGPECHDVQPPEGRSRDGLLTVNLREGGRLHLCAETKDDALAWKTALLEANSTPAPAGATVPPRSRRVCSKVRCVTRSWSPCKVERRIWRVYSPYQDYEVVPPNAHEATYVRSYYGPPYAGPGVTHIVREDPCYSAGAPLAMGMLAGAATGAALGSLMWSPCWF TRTRPLEQKLISEEDLAANDILDYKDDDDKV
Tag:	C-Myc/DDK
Purity:	> 80% as determined by SDS-PAGE and Coomassie blue staining
Concentration:	>0.05 µg/µL as determined by microplate BCA method
Labeling Method:	Labeled with [U- ¹³ C ₆ , ¹⁵ N ₄]-L-Arginine and [U- ¹³ C ₆ , ¹⁵ N ₂]-L-Lysine
Buffer:	25 mM Tris-HCl, 100 mM glycine, pH 7.3
Storage:	Store at -80°C. Avoid repeated freeze-thaw cycles.
Stability:	Stable for 3 months from receipt of products under proper storage and handling conditions.
RefSeq:	NP_067023
RefSeq Size:	2402
RefSeq ORF:	729
Synonyms:	KPL1; PHR1; PHRET1
Locus ID:	58473
UniProt ID:	Q9UF11 , A0A024R5H9



[View online »](#)

Cytogenetics: 11q13.4

Product images:



Coomassie blue staining of purified PLEKHB1 protein (Cat# [TP316627]). The protein was produced from HEK293T cells transfected with PLEKHB1 cDNA clone (Cat# [RC216627]) using MegaTran 2.0 (Cat# [TT210002]).