

## Product datasheet for PH316626

### BICC1 (NM\_001080512) Human Mass Spec Standard

#### Product data:

|                                       |  |
|---------------------------------------|--|
| Product Type:                         | Mass Spec Standards  |
| Description:                          | BICC1 MS Standard C13 and N15-labeled recombinant protein (NP_001073981) |
| Species:                              | Human  |
| Expression Host:                      | HEK293   |
| Expression cDNA Clone or AA Sequence: | RC216626   |
| Predicted MW:                         | 104.7 kDa  |
| Protein Sequence:                     | >RC216626 representing NM_001080512<br>Red=Cloning site Green=Tags(s)    |

MAAQGEPGYLAAQSDPGNSERSTDSPVPGSEDDLAVAGATLHSPWESEERFRVDRKKLEAMLQAAAEGKG  
RSGEDFFQKIMEETNTQIAWPSKLIKIGAKSKDPHIKVS GKKEDEVKEAKEMIMSVLDTKSNRVTLKMDVS  
HTEHSHVIGKGGNNIKKVMEEETGCHIHFPDSNRNNQAEKSNQVSIAGQPAGVESARVRIRELLPLVLMFE  
LPIAGILQVPDPNPSPIQHISQTYNISVSFKQSRMYGATVIVRGSQNNNTSAVKEGTAMLLEHLAGSLA  
SAIPVSTQLDIAAQHHLFMMGRNGSNIKHIMQRTGAQIHFPDPSNPQKKSTVYLQGTIESVCLARQYLMG  
CLPLVLMFDMKEEIEVDPQFIAQLMEQLDVFISIKPKPKQPSKSVIVKSVERNALNMYEARKCLLGLLESS  
GVTIATSPSPASCPAGLACPSLDILASAGLGLTGLGLLGPTTSLNTSTTPNSLLNALNSSVSPLQSPSS  
GTPSPTLWAPPLANTSSATGFS AIPHLMIPSTAQATLTNILLSGVPTYGHTAPSPPPGLTPVDVHINSMQ  
TEGKKISAALNGHAQSPDIKYGAI STSSLGKVL SANHGDP SIQTSGSEQTSPKSSPTEGCNDAFVEVGM  
PRSPSHSGNAGDLKQMMCP SKVSCAKRQTVELLQGTKNSHLHSTDRLLSDPELSATESPLADKKAPGSE  
AAERAAAQQNSERAHLAPRSSYVNMQAFDYEQKLLATKAMKKPVVTEVRTPTNTWSGLGFSKSMPE  
TIKELRRANHVSYKPTMTTTYEGSSMSLSRSNSREHLGGSESDNWRDRNGIGPGSHSEFAASIGSPKRK  
QNKLTEHYLSSSNYMDCISSLTGSNGCNLNSFSKGSDELPELFSKLGKLYTDVFQQQEIDLQTFLLTDQ  
DLKELGITTFGARRKMLLAISELNKNRRKLFESPNARTSFLEGGASGRLPRQYHSDIASVSGRW

TRTRPLEQKLI SEEDLAANDILDYKDDDDKV

|                  |  |
|------------------|--|
| Tag:             | C-Myc/DDK  |
| Purity:          | > 80% as determined by SDS-PAGE and Coomassie blue staining  |
| Concentration:   | >0.05 µg/µL as determined by microplate BCA method   |
| Labeling Method: | Labeled with [U- <sup>13</sup> C <sub>6</sub> , <sup>15</sup> N <sub>4</sub> ]-L-Arginine and [U- <sup>13</sup> C <sub>6</sub> , <sup>15</sup> N <sub>2</sub> ]-L-Lysine |
| Buffer:          | 25 mM Tris-HCl, 100 mM glycine, pH 7.3   |
| Storage:         | Store at -80°C. Avoid repeated freeze-thaw cycles.   |
| Stability:       | Stable for 3 months from receipt of products under proper storage and handling conditions.   |

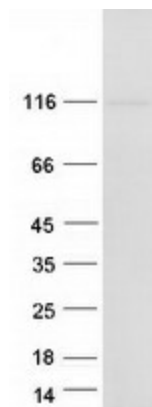


[View online »](#)

RefSeq: [NP\\_001073981](#)  
RefSeq Size: 3119  
RefSeq ORF: 2922  
Synonyms: BICC; CYSRD  
Locus ID: 80114  
UniProt ID: [Q9H694](#)  
Cytogenetics: 10q21.1

**Summary:** This gene encodes an RNA-binding protein that is active in regulating gene expression by modulating protein translation during embryonic development. Mouse studies identified the corresponding protein to be under strict control during cell differentiation and to be a maternally provided gene product. [provided by RefSeq, Apr 2009]

### Product images:



Coomassie blue staining of purified BICC1 protein (Cat# [TP316626]). The protein was produced from HEK293T cells transfected with BICC1 cDNA clone (Cat# [RC216626]) using MegaTran 2.0 (Cat# [TT210002]).