

Product datasheet for PH316603

SLAMF8 (NM_020125) Human Mass Spec Standard

Product data:

Product Type:	Mass Spec Standards
Description:	SLAMF8 MS Standard C13 and N15-labeled recombinant protein (NP_064510)
Species:	Human
Expression Host:	HEK293
Expression cDNA Clone or AA Sequence:	RC216603
Predicted MW:	31.7 kDa
Protein Sequence:	>RC216603 protein sequence Red=Cloning site Green=Tags(s) MVMRPLWSLLLWEALLPITVTGAQVLSKVGGSVLLVAARPPGFQVREAIWRSLWPSEELLATFFRGSLET LYHSRFLGRAQLHSNLSLELGPESGDSGNFSVLMVDTRGQPWTQTLQLKVYDAVPRPVVQVFI AVERDA QPSKTCQVFLSCWAPNISEITYSWRRETTMDFGMEPHSLFTDGGVLSISLGPGRDVAVYSCIVSNPVSWD LATVTPWDSCHHEAAPGKASYKDVLLVVVPVSLLLMLVTLFSAWHWCPCSGKKKKDVHADRVGPETENPL VQDLP TRTRPLEQKLI SEEDLAANDILDYKDDDDKV
Tag:	C-Myc/DDK
Purity:	> 80% as determined by SDS-PAGE and Coomassie blue staining
Concentration:	>0.05 µg/µL as determined by microplate BCA method
Labeling Method:	Labeled with [U- ¹³ C ₆ , ¹⁵ N ₄]-L-Arginine and [U- ¹³ C ₆ , ¹⁵ N ₂]-L-Lysine
Buffer:	25 mM Tris-HCl, 100 mM glycine, pH 7.3
Storage:	Store at -80°C. Avoid repeated freeze-thaw cycles.
Stability:	Stable for 3 months from receipt of products under proper storage and handling conditions.
RefSeq:	NP_064510
RefSeq Size:	3316
RefSeq ORF:	855
Synonyms:	BLAME; CD353; SBBI42
Locus ID:	56833



[View online »](#)

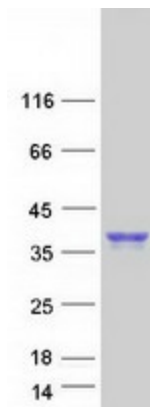
UniProt ID: [Q9P0V8](#)

Cytogenetics: 1q23.2

Summary: This gene encodes a member of the CD2 family of cell surface proteins involved in lymphocyte activation. These proteins are characterized by Ig domains. This protein is expressed in lymphoid tissues, and studies of a similar protein in mouse suggest that it may function during B cell lineage commitment. The gene is found in a region of chromosome 1 containing many CD2 genes. [provided by RefSeq, Jul 2008]

Protein Families: Druggable Genome, Transmembrane

Product images:



Coomassie blue staining of purified SLAMF8 protein (Cat# [TP316603]). The protein was produced from HEK293T cells transfected with SLAMF8 cDNA clone (Cat# [RC216603]) using MegaTran 2.0 (Cat# [TT210002]).