

Product datasheet for PH316602

GRK4 (NM_182982) Human Mass Spec Standard

Product data:

Product Type:	Mass Spec Standards
Description:	GRK4 MS Standard C13 and N15-labeled recombinant protein (NP_892027)
Species:	Human
Expression Host:	HEK293
Expression cDNA Clone or AA Sequence:	RC216602
Predicted MW:	66.6 kDa
Protein Sequence:	>RC216602 protein sequence Red=Cloning site Green=Tags(s)

MELENIVANSLLLKARQGGYGKKSGRSKKWEILTLPPVQCSELRHSIEKDYSSLCDKQPIGRRLFRQF
CDTKPTLKRHIEFLDAVAEYEVADDEDSDCGLSILDRFFNDKLAAPLPEIPPDVVTECRLGLKEENPSK
KAFFEETRVAHNYLRGEPFEEYQESSYFSQFLQWKWLERQPVTKNTFRHYRVLGKGGFGEVCACQVRATG
KMYACKKLQKKRIKKRKGAMALNEKRILEKVQSRFVVS LAYAYETKDALCLVLTIMNGGDLKFHIYNLG
NPGFDEQRAVFYAAELCCGLEDLQRERIVYRDLKPENILLDDRGHIRISDLGLATEIPEGQRVGRVGTV
GYMAPEVVNNEKYTFSPDWWGLGCLIIYEMIQGHSPPFKYKEKVKWEEVDQRIKNDTEEYSEKFSEDA KSI
CRMLLTKNPSKRLGCRGEGAAGVKQHPVFKDINFRRLANMLEPPFCPDPHAVYCKDVL DIEQFSAVKGI
YLDTADEDFYARFATGCVSIPWQNEMIESGCFKDINKSESEEALPLDLDKNIHTPVSRPNRGGFFYRLFR
GGCLTMVPSEKEVEPKQC

TRTRPLEQKLI SEEDLAANDILDYKDDDDKV

Tag:	C-Myc/DDK
Purity:	> 80% as determined by SDS-PAGE and Coomassie blue staining
Concentration:	>0.05 µg/µL as determined by microplate BCA method
Labeling Method:	Labeled with [U- 13C6, 15N4]-L-Arginine and [U- 13C6, 15N2]-L-Lysine
Buffer:	25 mM Tris-HCl, 100 mM glycine, pH 7.3
Storage:	Store at -80°C. Avoid repeated freeze-thaw cycles.
Stability:	Stable for 3 months from receipt of products under proper storage and handling conditions.
RefSeq:	NP_892027
RefSeq Size:	2321
RefSeq ORF:	1734



[View online »](#)

Synonyms: GPRK2L; GPRK4; GRK4a; IT11

Locus ID: 2868

UniProt ID: [P32298](#)

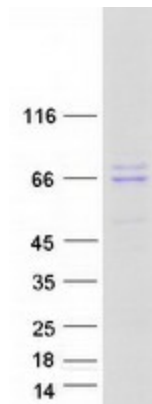
Cytogenetics: 4p16.3

Summary: This gene encodes a member of the guanine nucleotide-binding protein (G protein)-coupled receptor kinase subfamily of the Ser/Thr protein kinase family. The protein phosphorylates the activated forms of G protein-coupled receptors thus initiating its deactivation. This gene has been linked to both genetic and acquired hypertension. Several transcript variants encoding different isoforms have been found for this gene. [provided by RefSeq, Nov 2013]

Protein Families: Druggable Genome, Protein Kinase

Protein Pathways: Chemokine signaling pathway, Endocytosis

Product images:



Coomassie blue staining of purified GRK4 protein (Cat# [TP316602]). The protein was produced from HEK293T cells transfected with GRK4 cDNA clone (Cat# [RC216602]) using MegaTran 2.0 (Cat# [TT210002]).