

Product datasheet for PH316565

SNX16 (NM_022133) Human Mass Spec Standard

Product data:

Product Type:	Mass Spec Standards
Description:	SNX16 MS Standard C13 and N15-labeled recombinant protein (NP_071416)
Species:	Human
Expression Host:	HEK293
Expression cDNA Clone or AA Sequence:	RC216565
Predicted MW:	39.2 kDa
Protein Sequence:	>RC216565 protein sequence Red=Cloning site Green=Tags(s)

MATPYVPVPMPIGNSASSFTTNRNQRSSSFGSVSTSSNSKGLQLEDSNMGNFKQTSVPDQMDNTSSVCSS
PLIRTKFTGTASSIEYSTRPRDTEEQNPETVNWEDRPSTPTILGYEVMEERAKFTVYKILVKKTPPEESWV
VFRRYTDF SRLNDKLEKEMFPGFRLALPPKRWFKDYNADFLEDRQLGLQAFQLNLVAHKDIANCLAVREF
LCLDDPPGPFDSLEESRAFCEETNYRLQKELLEKQKEMESLKKLLSEKQLHIDTLENRIRTLSELEPE
ESLDVSETEGEQILKVESSALEVDQDVLDEESRADNKPLSFSEPENAVSEIEVAEVAYDAEED

TRTRPLEQKLI SEEDLAANDILDYKDDDDKV

Tag:	C-Myc/DDK
Purity:	> 80% as determined by SDS-PAGE and Coomassie blue staining
Concentration:	>0.05 µg/µL as determined by microplate BCA method
Labeling Method:	Labeled with [U- ¹³ C ₆ , ¹⁵ N ₄]-L-Arginine and [U- ¹³ C ₆ , ¹⁵ N ₂]-L-Lysine
Buffer:	25 mM Tris-HCl, 100 mM glycine, pH 7.3
Storage:	Store at -80°C. Avoid repeated freeze-thaw cycles.
Stability:	Stable for 3 months from receipt of products under proper storage and handling conditions.
RefSeq:	<u>NP_071416</u>
RefSeq Size:	3471
RefSeq ORF:	1032
Locus ID:	64089
UniProt ID:	<u>P57768</u>

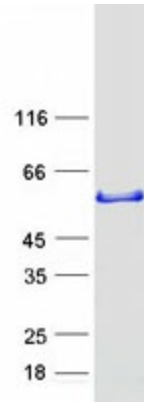


[View online »](#)

Cytogenetics: 8q21.13

Summary: This gene encodes a member of the sorting nexin family. Members of this family contain a phox (PX) domain, which is a phosphoinositide binding domain, and are involved in intracellular trafficking. The protein encoded by this gene associates with late endosome membranes as is involved in tubule formation, cholesterol transport, and transport of tetraspanin CD81. The encoded protein also inhibits cell migration and tumorigenesis. [provided by RefSeq, Jan 2017]

Product images:



Coomassie blue staining of purified SNX16 protein (Cat# [TP316565]). The protein was produced from HEK293T cells transfected with SNX16 cDNA clone (Cat# [RC216565]) using MegaTran 2.0 (Cat# [TT210002]).