

Product datasheet for PH316560

CADPS2 (NM_017954) Human Mass Spec Standard

Product data:

Product Type:	Mass Spec Standards
Description:	CADPS2 MS Standard C13 and N15-labeled recombinant protein (NP_060424)
Species:	Human
Expression Host:	HEK293
Expression cDNA Clone or AA Sequence:	RC216560
Predicted MW:	147.6 kDa
Protein Sequence:	>RC216560 representing NM_017954 Red=Cloning site Green=Tags(s)

MLDPSSSEESDEGLEEEESRDVLAAGSSQRAPPAPTREGRRDAPGRAGGGGAARSVSPSPSVLSEGRDE
PQRQLDDEQERRIRLQLYFVVRCAIAYPFNAKQPTDMARRQKLNKQQLQLLKERQAFNLNGETQIVADE
AFCNAVRSYYEVFLKSDRVARMVQSGGCSANDFREVFKNIEKRVRSLEIDGLSKETVLSWIAKYDAI
YRGEEDLCKQPNRMALSAVSELILSKEQLYEMFQQILGIKKLEHQLLYNACQLDNADEQAAQIRRELDGR
LQLADKMAKERKFPKFIKDMENMYIEELRSSVNLNMANLESPLVSKGGPEFKLQKLRKRSQNSAFLDIGD
ENEIQLSKSDVVLSTLEIVIMEVQGLKSVAPNRIVYCTMEVEGEKLQTDQAEASRPQWGTQGDFTTTHP
RPVVVKVLFTESTGVLALLEDKELGRVILYPTSNSKSAELHRMVVPKNSQSDSLKIKLAVRMDKPAHMKH
SGYLYALGQKVWKRWKKRYFVLVQVSQYTFAMCSYREKKSEPQELMQLLEGYTVDYTDPHGLQGGCMFFN
AVKEGDTVIFASDDEQDRILWVQAMYRATGQSYKVPVPAIQTKLNPKGGTLHADAQLSGKDADRFQKHGM
DEFISANPCKLDHAFLEFRILQRQTLDHRLNDSYSLGWFSPGQVFVLDYCYARYGVRGCHRLCYLAELM
EHSNGAVIDPTLLHYSFAFCASHVHGNRPDGIPTVSVEEKERFEEIKERLSSLENQISHFRYCFPFGR
PEGALKATLSLLERVLKMDIATPIPAEEVKVVRKCLEKAALINYTRLTEYAKIEETMNQASPAKLEEI
LHLAELCIEVLQQNEEHAEGREAFAWWPDLLAEHAEFKFWALFTVDMDTALEAQPQDSWDSFPLFQLLNN
FLRNDTLLCNGKFHKLQEIFVPLVVRVYVDMESSIAQSIHRGFEQETWQPVKNIANSNPVALPKVPSL
PLNLPQIPNISTASWMPSEYESTNGSATSEDLFWKLDALQMFVFDLHWPEQEF AHHLEQRLKLMASDMLE
ACVKRTRTAFELKLQKASKTTDLRIPASVCTMFNVLDVAKKQSTKL CALDGGQEQQYHSKIDDLIDNSVK
EIIISLLVSKFVSVLEGLVLSKLSRYDEGTFSSILSFTVKAANKYVDVVKPGMDLADTYIMFVRQNQDILR
EKVNEEMYIEKLFQWYSSSMKVICVWLTDRDLQLHIYQLKTLIKIVKKTYRDFRLQGVLEGLNSKTY
DTVHRRLLTVEEATASVSEGGGLQGITMKDSDEEEEG

TRTRPLEQKLISEEDLAANDILDYKDDDDKV

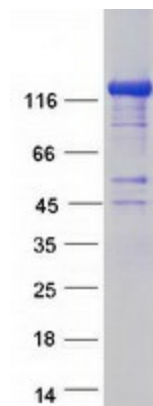
Tag:	C-Myc/DDK
Purity:	> 80% as determined by SDS-PAGE and Coomassie blue staining
Concentration:	>0.05 µg/µL as determined by microplate BCA method



[View online »](#)

Labeling Method:	Labeled with [U- ¹³ C ₆ , ¹⁵ N ₄]-L-Arginine and [U- ¹³ C ₆ , ¹⁵ N ₂]-L-Lysine
Buffer:	25 mM Tris-HCl, 100 mM glycine, pH 7.3
Storage:	Store at -80°C. Avoid repeated freeze-thaw cycles.
Stability:	Stable for 3 months from receipt of products under proper storage and handling conditions.
RefSeq:	NP_060424
RefSeq Size:	5815
RefSeq ORF:	3888
Synonyms:	CAPS2
Locus ID:	93664
UniProt ID:	Q86UW7
Cytogenetics:	7q31.32
Summary:	This gene encodes a member of the calcium-dependent activator of secretion (CAPS) protein family, which are calcium binding proteins that regulate the exocytosis of synaptic and dense-core vesicles in neurons and neuroendocrine cells. Mutations in this gene may contribute to autism susceptibility. Multiple transcript variants encoding different isoforms have been found for this gene. [provided by RefSeq, Nov 2009]

Product images:



Coomassie blue staining of purified CADPS2 protein (Cat# [TP316560]). The protein was produced from HEK293T cells transfected with CADPS2 cDNA clone (Cat# [RC216560]) using MegaTran 2.0 (Cat# [TT210002]).