

Product datasheet for PH316553

FAM29A (HAUS6) (NM_017645) Human Mass Spec Standard

Product data:

Product Type:	Mass Spec Standards
Description:	HAUS6 MS Standard C13 and N15-labeled recombinant protein (NP_060115)
Species:	Human
Expression Host:	HEK293
Expression cDNA Clone or AA Sequence:	RC216553
Predicted MW:	108.7 kDa
Protein Sequence:	>RC216553 protein sequence Red=Cloning site Green=Tags(s)

MSSASVTAFEKEHLWMYLQALGFEPGPATACGKIVSHTHLGVMFDFKLNRFDAFHIIISYFLFQVLDQSLT
KEVFKFCWPPFDQKSDTEFRKHCCWEIKRISGECGSSFPQVVGSLFSPGGPKFIHLMYHFARFVAMKYI
KNSKNSSHFFVETFNIPQDLHKCIARCHFARSRLQILQRQDCVTQKYQENAQLSVKQVRNLRSEICIG
LENQIKKMEPYDDHSNMEEKIQKVRSLWASVNETLMFLEKEREVSSVLSLVNQYALDGTNVAINIPRLL
LDKIEKQMFQLHIGNVVEAGKLNLLTVIQLLNEVLKVMKYERCQADQARLTVDLHYLEKETKFQKERLSD
LKHMRIRIKDDLTTIRHSVVEKQGEWHKKWKEFLGLSPFSLIKGWTPSVDLLPPMSPLSFDPASEEVYAK
SILCQYPASLPDAHQHNQENGRGSDTLGALHDLANSFASFLSQSVSSDRNSVTVLEKDTKMGTPKE
KNEAISKKIPEFEVENSPLSDVAKNTESSAFGGSLPAKKSDPFQKEQDHLVEEVARAVLSDSPQLSEGKE
IKLEELIDSLGSPFLTRNQIPRTPENLITEIRSSWRKAIEEENRTKEPIQMDVEHREVLPELSPVLHN
QREFSMADFLLETTVSDFGQSHLTEEKVISDCEVPQKHVLTSHIDEPTQNSDILLNKKVICKQDLECL
AFTKLSSETSRMETFSPAAGNRIDVMGGSEEFMKILDHLEVSCNKPSTNKTMLWNSFQISIGISSKSFKD
NDFGILHETLPEEVGHLNFSSSSSEANFKLEPNSPMHGGTLLLEDVVGGRQTPESDFNLQALRSRYEAL
KKSLSKKREESYLSNSQTPERHKPELSPTPQNVQTDLTLNFDLTDLHTEHIKPSLRTSIGERKRSLSPL
IKFSPVEQRLRTTIACSLGELPNLKEEDILNKSLDAKEPPSDLTR

TRTRPLEQKLI SEEDLAANDILDYKDDDDKV

Tag:	C-Myc/DDK
Purity:	> 80% as determined by SDS-PAGE and Coomassie blue staining
Concentration:	>0.05 µg/µL as determined by microplate BCA method
Labeling Method:	Labeled with [U- ¹³ C ₆ , ¹⁵ N ₄]-L-Arginine and [U- ¹³ C ₆ , ¹⁵ N ₂]-L-Lysine
Buffer:	25 mM Tris-HCl, 100 mM glycine, pH 7.3
Storage:	Store at -80°C. Avoid repeated freeze-thaw cycles.
Stability:	Stable for 3 months from receipt of products under proper storage and handling conditions.



[View online »](#)

RefSeq: [NP_060115](#)

RefSeq Size: 6365

RefSeq ORF: 2865

Synonyms: Dgt6; FAM29A

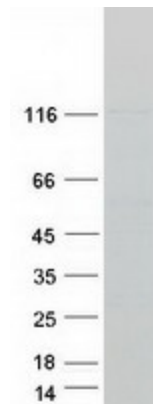
Locus ID: 54801

UniProt ID: [Q7Z4H7](#)

Cytogenetics: 9p22.1

Summary: The protein encoded by this gene is a subunit of the augmin complex. The augmin complex plays a role in microtubule attachment to the kinetochore and central spindle formation. This protein may have a role in efficient chromosome congression and segregation by promoting microtubule-dependent microtubule amplification. Pseudogenes of this gene are located on chromosomes 7 and 20. Alternative splicing results in multiple transcript variants that encode different protein isoforms. [provided by RefSeq, Aug 2012]

Product images:



Coomassie blue staining of purified HAUS6 protein (Cat# [TP316553]). The protein was produced from HEK293T cells transfected with HAUS6 cDNA clone (Cat# [RC216553]) using MegaTran 2.0 (Cat# [TT210002]).