

## Product datasheet for PH316544

### NEDL2 (HECW2) (NM\_020760) Human Mass Spec Standard

#### Product data:

Product Type:	Mass Spec Standards
Description:	HECW2 MS Standard C13 and N15-labeled recombinant protein (NP_065811)
Species:	Human
Expression Host:	HEK293
Expression cDNA Clone or AA Sequence:	RC216544
Predicted MW:	175.6 kDa
Protein Sequence:	>RC216544 representing NM_020760 Red=Cloning site Green=Tags(s)

MASSAREHLLFVRRRNPMRYTLSPENLQSLAAQSSMPENMTLQRANSDDLVTSESRSSLTASMYEYTL  
GQAQNL IIFWDIKEEVDPDWIGLYHIDENSPANFWDKSKNRGVTGTQKQIVVRIEPPGYFMEPEIKICF  
KYYHGISGALRATTPCITVKNPAVMGGAEGMEGGASGNLHSRKLVSFTLSDLRAVGLKKGMMFNPDPLYK  
MSIQPGKSSFPCTCAHHGQERRSTIISNTTNPWIWHREKYSFFALLTDVLEIEIKDKFAKSRPIIKRFLGK  
LTIPVQRLLERQAIGDQMLSYNLGRRLPADHVSGYLQFKVEVTSVHEDASPEAVGTILGVNSVNGDLGS  
PSDDEDMPGSHHDSQVCSNGPVSEDSAADGTPKHSFRTSSTLEIDTEELTSTSSRTPPRGRQDSLNDYL  
DAIEHNGHSRPGTATCSERSMGASPKLRSFPTDTRLNAMLHIDSDEEDHEFQQDLGYPSLEEGLIM  
FSRASRADDGSLTSQTKLEDNPVENEEASTHEAASFEDKPENLELAESSLPAGPAPEEGEGGPEPQPSA  
DQGSANELCGSQEVDQPTSGADTGTSDASGSRRAVSETESLDQGSSEPSQVSETEPSPARTESVSEAST  
RPEGESDLECADSSCNE SVTTQLSSVDTRCSSLESARFPETPAFSSQEEEDGACAAEPTSSGPAEGSQES  
VCTAGSLPVVQVPSGEDEGPGAESATVPDQEELGEVWQRRGSLEGAAAAAESPPEEGSAGEAQGTCEGA  
TAQEEGATGGSQANGHQPLRSLPSVRQDVSRYQRVDEALPPNWEARIDSHGRIFYVDHVNRITTTWQRPTA  
PPAPQVLQRSNSIQQMEQLNRRYQSIIRRTMTNERPEENTNAIDGAGEEADFHQASADFRRENILPHSTSR  
SRITLLLQSPVKFLISPEFFTVLHNSPSAYRMFTNNTCLKHMITKVRDTHHFERYQHNRDLVGFLNMF  
ANKQLELPRGWEMKHDHQKAFVDHNSRTTTFIDPRLPLQSSRPTSALVHRQHLTRQRSHSAGEVGEDS  
RHAGPPVLRPSSFTNTVSRPQYQDMVPVAYNDKIVAFRLRQPNIFEILQERQPDLTRNHSLREKIQFIRT  
EGTPGLVRLSSADLVMLLSLFEIEIMSYPHALLHPSYCSRPGSPVSSPQNSPGTQRANARAPAPYK  
RDFEAKLRNFYRKLETKYGGQGGKLLIIRRDHLLLEDANQIMGYSRKDLQRNKLYVTVFVGEGLDYSG  
PSREFFFLVSRELFNPYYGLFEYSANDTYTVQISPMFAFVDNHHEWFRFSGRILGLALIHQYLLDAFFTR  
PFYKALLRILCDLSDLEYLDEEFHQSLQWMDNDIHDIDLDTFTVNEEVFGQITERELKPGGANIPVTEK  
NKKEYIERMVKWRIERG VVQQTESLVRGFYEVVDARLVSVDARELELVIAGTAEIDLSDWRNNTYRGG  
YHDNHIVIRWFWAVERFNNEQRLRLQLFVTGTSSIPYEGFASLRGNSGPRRFCVEKWKGITAPRAHTC  
FNRLDLPPYPSFSMLYKLLTAVEETSTFGLE

TRTRPLEQKLI SEEDLAANDILDYKDDDDKV

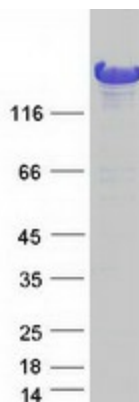
Tag: C-Myc/DDK



[View online »](#)

<b>Purity:</b>	> 80% as determined by SDS-PAGE and Coomassie blue staining
<b>Concentration:</b>	>0.05 µg/µL as determined by microplate BCA method
<b>Labeling Method:</b>	Labeled with [U- <sup>13</sup> C <sub>6</sub> , <sup>15</sup> N <sub>4</sub> ]-L-Arginine and [U- <sup>13</sup> C <sub>6</sub> , <sup>15</sup> N <sub>2</sub> ]-L-Lysine
<b>Buffer:</b>	25 mM Tris-HCl, 100 mM glycine, pH 7.3
<b>Storage:</b>	Store at -80°C. Avoid repeated freeze-thaw cycles.
<b>Stability:</b>	Stable for 3 months from receipt of products under proper storage and handling conditions.
<b>RefSeq:</b>	<a href="#">NP_065811</a>
<b>RefSeq Size:</b>	6926
<b>RefSeq ORF:</b>	4716
<b>Synonyms:</b>	NDHSAL; NEDL2
<b>Locus ID:</b>	57520
<b>UniProt ID:</b>	<a href="#">Q9P2P5</a>
<b>Cytogenetics:</b>	2q32.3
<b>Summary:</b>	This gene encodes a member of a family of E3 ubiquitin ligases which plays an important role in the proliferation, migration and differentiation of neural crest cells as a regulator of glial cell line-derived neurotrophic factor (GDNF)/Ret signaling. This gene also plays an important role in angiogenesis through stabilization of endothelial cell-to-cell junctions as a regulator of angiominin-like 1 stability. The encoded protein contains an N-terminal calcium/lipid-binding (C2) domain involved in membrane targeting, two-four WW domains responsible for cellular localization and substrate recognition, and a C-terminal homologous with E6-associated protein C-terminus (HECT) catalytic domain. Naturally occurring mutations in this gene are associated with neurodevelopmental delay, hypotonia, and epilepsy. The decreased expression of this gene in the aganglionic colon is associated with Hirschsprung's disease. Alternative splicing results in multiple transcript variants. [provided by RefSeq, Feb 2017]
<b>Protein Families:</b>	Druggable Genome

## Product images:



Coomassie blue staining of purified HECW2 protein (Cat# [TP316544]). The protein was produced from HEK293T cells transfected with HECW2 cDNA clone (Cat# [RC216544]) using MegaTran 2.0 (Cat# [TT210002]).

