

Product datasheet for PH316529

PIST (GOPC) (NM_020399) Human Mass Spec Standard

Product data:

| | |
|---------------------------------------|--|
| Product Type: | Mass Spec Standards |
| Description: | GOPC MS Standard C13 and N15-labeled recombinant protein (NP_065132) |
| Species: | Human |
| Expression Host: | HEK293 |
| Expression cDNA Clone or AA Sequence: | RC216529 |
| Predicted MW: | 50.3 kDa |
| Protein Sequence: | >RC216529 representing NM_020399 Red=Cloning site Green=Tags(s) |

MSAGGPCPAAAGGGPGGASCSVGPAGGVSFMRWLEKLEKFDKAFVDVLDLLGEIDPDQADITYEGRQKM
TSLSSCFACLCHKAQSVSQINHKLEAQLVDLKSELTETQAEKVLEKEVHDQLQLHSIQLQLHAKTGQS
ADSGTIKAKLSGSPVEELERELEANKKEKMKEAQLEAEVKLLRKENEALRRHIAVLQAEVYGARLAAKYL
DKELAGRVQIQILLGRDMKGPADHKLWNQLEAEIHLHRHKTIVIRACRGRNDLKRPMQAPPQHDQDSLKKS
QGVGPIRKVLLKEDHEGLGISITGGKEHGVPIILISEIHPGQPADRCGGLHVGDAILAVNGVNLRTDKHK
EAVTILSQQRGEIEFEVYVVAPEVSDDENVEYEDES GHRYRLYLDELEGGNGPGASCKDTSGEIKVLQG
FNKKAVTDTHEGDLGTASETPLDDGASKLDDLHTLYHKKSY

TRTRPLEQKLISEEDLAANDILDYKDDDDKV

| | |
|------------------|--|
| Tag: | C-Myc/DDK |
| Purity: | > 80% as determined by SDS-PAGE and Coomassie blue staining |
| Concentration: | >0.05 µg/µL as determined by microplate BCA method |
| Labeling Method: | Labeled with [U- ¹³ C ₆ , ¹⁵ N ₄]-L-Arginine and [U- ¹³ C ₆ , ¹⁵ N ₂]-L-Lysine |
| Buffer: | 25 mM Tris-HCl, 100 mM glycine, pH 7.3 |
| Storage: | Store at -80°C. Avoid repeated freeze-thaw cycles. |
| Stability: | Stable for 3 months from receipt of products under proper storage and handling conditions. |
| RefSeq: | <u>NP_065132</u> |
| RefSeq Size: | 4604 |
| RefSeq ORF: | 1386 |
| Synonyms: | CAL; dj94G16.2; FIG; GOPC1; PIST |



[View online »](#)

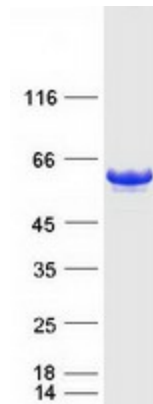
Locus ID: 57120

UniProt ID: [Q9HD26](#)

Cytogenetics: 6q22.1

Summary: This gene encodes a Golgi protein with a PDZ domain. The PDZ domain is globular and proteins which contain them bind other proteins through short motifs near the C-termini. Mice which are deficient in the orthologous protein have globozoospermia and are infertile. Multiple transcript variants encoding different isoforms have been found for this gene. [provided by RefSeq, Dec 2011]

Product images:



Coomassie blue staining of purified GOPC protein (Cat# [TP316529]). The protein was produced from HEK293T cells transfected with GOPC cDNA clone (Cat# [RC216529]) using MegaTran 2.0 (Cat# [TT210002]).