

Product datasheet for PH316527

GALK2 (NM_001001556) Human Mass Spec Standard

Product data:

Product Type:	Mass Spec Standards
Description:	GALK2 MS Standard C13 and N15-labeled recombinant protein (NP_001001556)
Species:	Human
Expression Host:	HEK293
Expression cDNA Clone or AA Sequence:	RC216527
Predicted MW:	49.1 kDa
Protein Sequence:	>RC216527 representing NM_001001556 Red=Cloning site Green=Tags(s)

MPVLYDRLLKLEMFNSKFGSIPKFYVRAPGRVNIIGEHDYCGYSVLPMAVEQDVLIAVEPVKTYALQL
ANTNPLYPDFSTSANNIQIDKTKPLWHNYFLCGLKGIQEHLGNLTGMNCLVDGNIPSSGLSSSSALV
CCAGLVTLTVLGRNLSKVELAEICAKSERYIGTEGGMDQSIISFLAEEGTAKLIEFSPLRATDVKLP
VFIANSCEVMNKAATSHFNIRVMECRLAAKLLAKYKSLQWQKVLRLVEEVQAKLGISLEEMLLVTEDALH
PEPYNPEEICRCLGISLEELRTQILSPNTQDVLIFKLYQRAKHVYSEAAARVLQFKKICEEAPENMVQLLG
ELMNQSHMSCRDMYECSCPELDQLVDICRKFQAQGSRLTGAGWGGCTVSMVPADKLP
SFLANVHKAYYQRSDGSLAPEKQSLFATKPGGGALVLL

TRTRPLEQKLISEEDLAANDILDYKDDDDKV

Tag:	C-Myc/DDK
Purity:	> 80% as determined by SDS-PAGE and Coomassie blue staining
Concentration:	>0.05 µg/µL as determined by microplate BCA method
Labeling Method:	Labeled with [U- ¹³ C ₆ , ¹⁵ N ₄]-L-Arginine and [U- ¹³ C ₆ , ¹⁵ N ₂]-L-Lysine
Buffer:	25 mM Tris-HCl, 100 mM glycine, pH 7.3
Storage:	Store at -80°C. Avoid repeated freeze-thaw cycles.
Stability:	Stable for 3 months from receipt of products under proper storage and handling conditions.
RefSeq:	NP_001001556
RefSeq Size:	3208
RefSeq ORF:	1341
Synonyms:	GK2



[View online »](#)

Locus ID: 2585

UniProt ID: [Q01415](#)

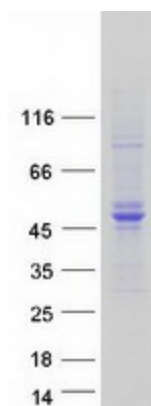
Cytogenetics: 15q21.1-q21.2

Summary: This gene encodes a highly efficient N-acetylgalactosamine (GalNAc) kinase, which has galactokinase activity when galactose is present at high concentrations. The encoded protein is a member of the GHMP kinase family. Alternative splicing results in multiple transcript variants. [provided by RefSeq, Jun 2017]

Protein Families: Druggable Genome

Protein Pathways: Amino sugar and nucleotide sugar metabolism, Galactose metabolism, Metabolic pathways

Product images:



Coomassie blue staining of purified GALK2 protein (Cat# [TP316527]). The protein was produced from HEK293T cells transfected with GALK2 cDNA clone (Cat# [RC216527]) using MegaTran 2.0 (Cat# [TT210002]).