

## Product datasheet for PH316481

### NALP1 (NLRP1) (NM\_033004) Human Mass Spec Standard

#### Product data:

Product Type:	Mass Spec Standards
Description:	NLRP1 MS Standard C13 and N15-labeled recombinant protein (NP_127497)
Species:	Human
Expression Host:	HEK293
Expression cDNA Clone or AA Sequence:	RC216481
Predicted MW:	165.7 kDa
Protein Sequence:	>RC216481 representing NM_033004 Red=Cloning site Green=Tags(s)

MAGGAWGRLACYLEFLKKEELKEFQLLLANKAHSRSSGETPAQPEKTSMEVASYLVAQYGEQRAWDLA  
LHTWEQMLRSLCAQAQEGAGHSPSPFPYSPSEPHLGSPSQPTSTAVLMPWIHELPAAGCTQGSERRVLRQL  
PDTSGRRWREISASLLYQALPSSPDHESPSQESPNAPTSTAVLGSWGSPQPPLAPREQEAPGTQWPLDE  
TSGIYYTEIREREREKSEKGRPPWAAVVGTPPQAHTSLQPHHPWEPVRESLCTWPKNEDFNQKFTQ  
LLLLQRPHRSQDPLVKRSWPDYVEENRGLIEIRDLFPGPLDTEPRIVILQGAAGIGKSTLARQVKEA  
WGRGQLYGDRFQHVYFSCRELAQSKVVSALAEIGKDGATPAPIRQILSRPERLLFILDGVDEPGWVLQ  
EPSSSELCHWSQPQPADALLGSLGKTLPEASFLITARTTALQNLIPSLEQARWVEVLGFSESSRKEYF  
YRYFTDERQAIRAFRLVKSNKELWALCLVPVSWLACTCLMQQMKRKEKLTLSKTTTTLCLHYLAQALQ  
AQPLGPQLRDLCSLAAEGIWQKKTFLSPDDL RKHGLDGAIISTFLKMGILQEHP IPLSYSF IHLCFQEFF  
AAMSYVLEDEKGRGKHSNCI IDLEKTLEAYGIHGLFGASTTRFLGLLSDEGEREMENIFHCRLSQGRNL  
MQWVPSLQLLLQPHSLES LHCLYETRNKTLTQVMAHFEEMGMCVETDMELLVCTFCIKFSRHVKKLQLI  
EGRQHRSTWSPM VVLFWRVVPVTDAYWQILF SVLKVTRNLKELDL SGNSLSHSAVKSLCKTLRRPRCLLE  
TLRLAGCGLTAEDCKDLAFGLRANQTL TELDL SFNVL TDAGAKHL CQRLRQPSCKLQRLQLVSCGLTSDC  
CQDLASVL SASPSL KELDLQNNLDDVGVRLLCEGLRHPACKL IRLGLDQTTL SDEMQRLE RALEQEKPO  
LLIFSRRKPSVMTPT EGLDTGEMSNSTSSLKRQRLGSERAASHVAQANLKL DVSKIFPIAEIAEESSPE  
VVPVELLCVPSASQGD LHTKPLGTD DDFWGPVATEVVDKEKNLYRVHFPVAGSYRWPNTGLCFVMR  
EAVTVEIEFCVWDQFLGEINPQHSWMVAGPLLDIKAEPGAVEAVHLPHFVALQGGHVDTSLFQMAHFKEE  
GMLLEKPARVELHHIVLENPSF SPLGVLLKMIHNALRFIPVTSVLLYHRVHPEE VTFHLYLIPSDCSIR  
KAIDDLKMFQFVRIHKPPPL TPLYMGCRTVSGSGMLEILPKELELCYRSPGEDQLFSEFYVGHLS  
GIRLQVKDKKDETLVWEALVKPGDLM PATTLPARI AVPSPLDAPQLLHFVDQYREQLIARVTSVEVVL  
DKLHGQVLSQEYERVLAENTRPSQMRKLFSLSQSWDRCKDGLYQALKETHPHLIMELWEKGSKGLLP  
LSS

TRTRPLEQKLISEEDLAANDILDYKDDDDKV

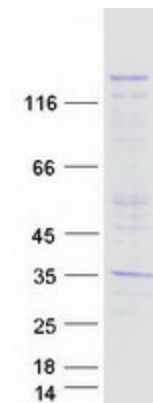
Tag:	C-Myc/DDK
Purity:	> 80% as determined by SDS-PAGE and Coomassie blue staining



[View online >](#)

<b>Concentration:</b>	>0.05 µg/µL as determined by microplate BCA method
<b>Labeling Method:</b>	Labeled with [U- <sup>13</sup> C <sub>6</sub> , <sup>15</sup> N <sub>4</sub> ]-L-Arginine and [U- <sup>13</sup> C <sub>6</sub> , <sup>15</sup> N <sub>2</sub> ]-L-Lysine
<b>Buffer:</b>	25 mM Tris-HCl, 100 mM glycine, pH 7.3
<b>Storage:</b>	Store at -80°C. Avoid repeated freeze-thaw cycles.
<b>Stability:</b>	Stable for 3 months from receipt of products under proper storage and handling conditions.
<b>RefSeq:</b>	<a href="#">NP_127497</a>
<b>RefSeq Size:</b>	5617
<b>RefSeq ORF:</b>	4419
<b>Synonyms:</b>	AIADK; CARD7; CIDED; CLR17.1; DEFCAP; DEFCAP-L/S; JRRP; MSPC; NAC; NALP1; PP1044; SLEV1; VAMAS1
<b>Locus ID:</b>	22861
<b>UniProt ID:</b>	<a href="#">Q9C000</a>
<b>Cytogenetics:</b>	17p13.2
<b>Summary:</b>	This gene encodes a member of the Ced-4 family of apoptosis proteins. Ced-family members contain a caspase recruitment domain (CARD) and are known to be key mediators of programmed cell death. The encoded protein contains a distinct N-terminal pyrin-like motif, which is possibly involved in protein-protein interactions. This protein interacts strongly with caspase 2 and weakly with caspase 9. Overexpression of this gene was demonstrated to induce apoptosis in cells. Multiple alternatively spliced transcript variants encoding distinct isoforms have been found for this gene, but the biological validity of some variants has not been determined. [provided by RefSeq, Jul 2008]
<b>Protein Families:</b>	Druggable Genome
<b>Protein Pathways:</b>	NOD-like receptor signaling pathway

### Product images:



Coomassie blue staining of purified NLRP1 protein (Cat# [TP316481]). The protein was produced from HEK293T cells transfected with NLRP1 cDNA clone (Cat# [RC216481]) using MegaTran 2.0 (Cat# [TT210002]).