

Product datasheet for PH316448

Phospholipase C gamma 1 (PLCG1) (NM_002660) Human Mass Spec Standard

Product data:

Product Type:	Mass Spec Standards
Description:	PLCG1 MS Standard C13 and N15-labeled recombinant protein (NP_002651)
Species:	Human
Expression Host:	HEK293
Expression cDNA Clone or AA Sequence:	RC216448
Predicted MW:	148.5 kDa
Protein Sequence:	>RC216448 representing NM_002660 Red=Cloning site Green=Tags(s)

MAGAASPCANGCGPAPSDAEVLHLCRSLEVGTVMTLFYSKKSQRPERKTFQVKLETRQITWSRGADKIE
GAIDIREIKEIRPGKTSRDFDRYQEDPAFRPDQSHCFVILYGMFRLKTLQATSEDEVNMWIKGLTWL
MEDTLQAPTPLQIERWLRKQFYSVDRNREDRISAKDLKNMLSQVNYRVPNMRFLRERLTDLEQRSGDITY
GQFAQLYRSLMYSAQKTMDFLEASTLRAGERPELCRVSLPEFQQFLLDYQGELWAVDRLQVQEFMLSF
LRDPLREIEEPYFFLDEFVTFLFSKENSVMNSQLDAVCPDTMNNPLSHYWISSSHNTYL TGDQFSSESSL
EAYARCLRMGCRCIELDCWDGPDGMPVIYHGHTLTTKIKFSDVLHTIKEHAFVASEYPVILSIEDHCSIA
QQRNMAQYFKKVLGDTLLTKPVEISADGLPSNQLKRRKILIKHKKLAEGSAYEEVPTSMYSENDISNSI
KNGILYLEDPVNHWEYPHYFVL TSSKIYYSEETSDDQNEDEEPEKVSSTELHSNEKWFHGKLGAGRD
GRHIAERLLTEYCIETGAPDGSFLVRESETFVGDYTL SFWRNGKVQHCRVHSRQDAGTPKFLLTDNLVFD
SLYDLITHYQQVPLRCNEFEMRLSEPVPQTNAHESKEWYHASLTRAQAEHMLMRVPRDGAFLVVRKRNEPN
SYAISFRAEGKIKHCRVQQEQGVMLGNSEFDSLVDLISYYEKHPLRYKMKLRYPINEEALEKIGTAEPD
YGALYEGRNPGFYVEANPMPTFKCAVKALFDYKAQREDELTFKSAIIQNVEKQEGGWWRGDYGGKKQLW
FPSNYVEEMVNPVLEPEREHLDENSPLGDLRGVLDVPACQIAIRPEGKNNRLFVFSISMASVAHWSLD
VAADSQEELQDWVKKIREVAQTADARL TEGKIMERRKIALELSELVYCRPVPFDEEKIGTERACYRDM
SSFPETKAEKYVNKAKGKFLQYNRLQLSRIYKQRLDSSNYDPLPMWICGSQVALNFQTPDKPMQMN
QALFMTGRHCGYVLQPSTMRDEAFDPFDKSSLRGLEPCAISIEVLGARHLPKNGRGIVCFVEIEVAGAE
YDSTKQKTEFVVDNGLNPVWPAKPFHFQISNPEFAFLRFVVEEDMFSDQNFLAQATFPVKGLKTYRVA
PLKNNYSEDLLEASLLIKIDIFPAKQENGDLSPFSGTSLRERGSASGQLFHGRAREGSFESRYQQPFED
FRISQEHLADHFDSRERRAPRRTRVNGDNRL

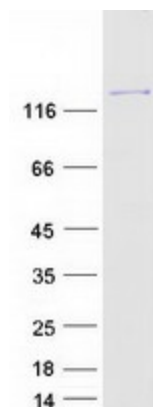
TRTRPLEQKLISEEDLAANDILDYKDDDDKV

Tag:	C-Myc/DDK
Purity:	> 80% as determined by SDS-PAGE and Coomassie blue staining
Concentration:	>0.05 µg/µL as determined by microplate BCA method



[View online »](#)

Labeling Method:	Labeled with [U- 13C6, 15N4]-L-Arginine and [U- 13C6, 15N2]-L-Lysine
Buffer:	25 mM Tris-HCl, 100 mM glycine, pH 7.3
Storage:	Store at -80°C. Avoid repeated freeze-thaw cycles.
Stability:	Stable for 3 months from receipt of products under proper storage and handling conditions.
RefSeq:	NP_002651
RefSeq Size:	5205
RefSeq ORF:	3873
Synonyms:	NCKAP3; PLC-II; PLC1; PLC148; PLCgamma1
Locus ID:	5335
UniProt ID:	P19174 , Q9UFY1 , Q4LE43
Cytogenetics:	20q12
Summary:	<p>The protein encoded by this gene catalyzes the formation of inositol 1,4,5-trisphosphate and diacylglycerol from phosphatidylinositol 4,5-bisphosphate. This reaction uses calcium as a cofactor and plays an important role in the intracellular transduction of receptor-mediated tyrosine kinase activators. For example, when activated by SRC, the encoded protein causes the Ras guanine nucleotide exchange factor RasGRP1 to translocate to the Golgi, where it activates Ras. Also, this protein has been shown to be a major substrate for heparin-binding growth factor 1 (acidic fibroblast growth factor)-activated tyrosine kinase. Two transcript variants encoding different isoforms have been found for this gene. [provided by RefSeq, Jul 2008]</p>
Protein Families:	Druggable Genome
Protein Pathways:	Calcium signaling pathway, Epithelial cell signaling in Helicobacter pylori infection, ErbB signaling pathway, Fc epsilon RI signaling pathway, Fc gamma R-mediated phagocytosis, Glioma, Inositol phosphate metabolism, Leukocyte transendothelial migration, Metabolic pathways, Natural killer cell mediated cytotoxicity, Neurotrophin signaling pathway, Non-small cell lung cancer, Pathways in cancer, Phosphatidylinositol signaling system, T cell receptor signaling pathway, VEGF signaling pathway, Vibrio cholerae infection

Product images:

Coomassie blue staining of purified PLCG1 protein (Cat# [TP316448]). The protein was produced from HEK293T cells transfected with PLCG1 cDNA clone (Cat# [RC216448]) using MegaTran 2.0 (Cat# [TT210002]).