

Product datasheet for PH316442

FOXL1 (NM_005250) Human Mass Spec Standard

Product data:

Product Type:	Mass Spec Standards
Description:	FOXL1 MS Standard C13 and N15-labeled recombinant protein (NP_005241)
Species:	Human
Expression Host:	HEK293
Expression cDNA Clone or AA Sequence:	RC216442
Predicted MW:	36.3 kDa
Protein Sequence:	>RC216442 representing NM_005250 Red=Cloning site Green=Tags(s)

MSHLFDPRLPALAASPMLYLYGPERPGLPLAFAPAAALASGRAETPQKPPYSYIALIAMAIQDAPEQRV
TLNGIYQFIMDRFPFYHDNRQGWQNSIRHNL SLNDCFVKVPREKGRPGKGSYWTLDPRLDMFENGYRR
RKRKPKPGGAPEAKRPRAEHQSAEAQPEAGSGAGGSGPAISRQAAPAGPSPLLDGSPAPLHWPG
TASPNEDAGDAAQGAAAVAVGQAARTGDGPGSPLRPASRSPKSSDKSKSFIDSILAGKQGKPPSGDE
LLGGAKPGGGRLGASLLAASSLRPPFNASMLDPHVQGGFYQLGIPFLSYFPLQVPDVLHFQ

TRTRPLEQKLI SEEDLAANDILDYKDDDDKV

Tag:	C-Myc/DDK
Purity:	> 80% as determined by SDS-PAGE and Coomassie blue staining
Concentration:	>0.05 µg/µL as determined by microplate BCA method
Labeling Method:	Labeled with [U- ¹³ C ₆ , ¹⁵ N ₄]-L-Arginine and [U- ¹³ C ₆ , ¹⁵ N ₂]-L-Lysine
Buffer:	25 mM Tris-HCl, 100 mM glycine, pH 7.3
Storage:	Store at -80°C. Avoid repeated freeze-thaw cycles.
Stability:	Stable for 3 months from receipt of products under proper storage and handling conditions.
RefSeq:	<u>NP_005241</u>
RefSeq Size:	1038
RefSeq ORF:	1035
Synonyms:	FKH6; FKHL11; FREAC7
Locus ID:	2300



[View online »](#)

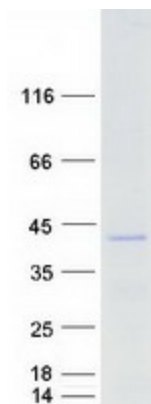
UniProt ID: [Q12952](#), [Q498Y4](#)

Cytogenetics: 16q24.1

Summary: This gene encodes a member of the forkhead/winged helix-box (FOX) family of transcription factors. FOX transcription factors are characterized by a distinct DNA-binding forkhead domain and play critical roles in the regulation of multiple processes including metabolism, cell proliferation and gene expression during ontogenesis. [provided by RefSeq, Nov 2012]

Protein Families: Transcription Factors

Product images:



Coomassie blue staining of purified FOXL1 protein (Cat# [TP316442]). The protein was produced from HEK293T cells transfected with FOXL1 cDNA clone (Cat# [RC216442]) using MegaTran 2.0 (Cat# [TT210002]).