

Product datasheet for PH316420

RAD1 (NM_002853) Human Mass Spec Standard

Product data:

Product Type:	Mass Spec Standards
Description:	RAD1 MS Standard C13 and N15-labeled recombinant protein (NP_002844)
Species:	Human
Expression Host:	HEK293
Expression cDNA Clone or AA Sequence:	RC216420
Predicted MW:	31.8 kDa
Protein Sequence:	>RC216420 protein sequence Red=Cloning site Green=Tags(s) MPLL TQQIQDEDDQYSLVASLDNVRNLSTILKAIHFREHATCFATKNGIKVTVENAKCVQANAFIQAGIF QEFKVQEESVTFRINLTVLLDCLSI FGSSPMPGTLTALRCYQGYGYPLMLFLEEGGVTVCKINTQEPE ETLDFDFCSTNVINKIILQSEGLREAFSELDMTSEVLQITMSPDKPYFRLSTFGNAGSSHLDPKSDLM EAFHCNQTVNRYKISLLKPSTKALVLSCKVSI RTDNRGFLSLQYMI RNEDGQICFVEYYCCPDEEVPE ES TRTRPLEQKLI SEEDLAANDILDYKDDDDKV
Tag:	C-Myc/DDK
Purity:	> 80% as determined by SDS-PAGE and Coomassie blue staining
Concentration:	>0.05 µg/µL as determined by microplate BCA method
Labeling Method:	Labeled with [U- ¹³ C ₆ , ¹⁵ N ₄]-L-Arginine and [U- ¹³ C ₆ , ¹⁵ N ₂]-L-Lysine
Buffer:	25 mM Tris-HCl, 100 mM glycine, pH 7.3
Storage:	Store at -80°C. Avoid repeated freeze-thaw cycles.
Stability:	Stable for 3 months from receipt of products under proper storage and handling conditions.
RefSeq:	NP_002844
RefSeq Size:	4683
RefSeq ORF:	846
Synonyms:	HRAD1; REC1
Locus ID:	5810



[View online »](#)

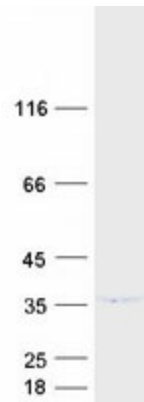
UniProt ID: [O60671](#), [A0A024R045](#)

Cytogenetics: 5p13.2

Summary: This gene encodes a component of a heterotrimeric cell cycle checkpoint complex, known as the 9-1-1 complex, that is activated to stop cell cycle progression in response to DNA damage or incomplete DNA replication. The 9-1-1 complex is recruited by RAD17 to affected sites where it may attract specialized DNA polymerases and other DNA repair effectors. Alternatively spliced transcript variants of this gene have been described. [provided by RefSeq, Jan 2009]

Protein Families: Druggable Genome

Product images:



Coomassie blue staining of purified RAD1 protein (Cat# [TP316420]). The protein was produced from HEK293T cells transfected with RAD1 cDNA clone (Cat# [RC216420]) using MegaTran 2.0 (Cat# [TT210002]).