

## Product datasheet for PH316339

### AVL9 (NM\_015060) Human Mass Spec Standard

#### Product data:

Product Type:	Mass Spec Standards
Description:	AVL9 MS Standard C13 and N15-labeled recombinant protein (NP_055875)
Species:	Human
Expression Host:	HEK293
Expression cDNA Clone or AA Sequence:	RC216339
Predicted MW:	71.8 kDa
Protein Sequence:	>RC216339 representing NM_015060 Red=Cloning site Green=Tags(s)

MEKARRGGDGVPRGPVLIHVVGFFHHKGCQVEFSYPPLIPGDGHSHTLPEEWKYL PFLALPDGAHNYQ  
EDTVFFHLPPRNGNGATVFGISCYRQIEAKALKVRQADITRETVQKSVCVLSKLPYGLLQAKLQLITHA  
YFEEKDFSQISILKELYEHMNSLGGASLEGSQVYLGSPRDLVLFHRHKVLI LFKLILLEKKVLFYISP  
VNKLVGALMTVLSLFPGMIEHGLSDCSQYRPRKSMSEGGGLQESNPCADDFVSASTADVSHNTLGTIRKV  
MAGNHGEDAAMKTEEPLFQVEDSSKGQEPNDTNQYLKPPSRPSPDSESDWETLDPSVLEDPNLKEREQL  
GSDQTNLFPKDSVPSESLPITVQPQANTGQVVLIPGLISGLEEDQYGMPLAIFTKGYLCLPYMALQQHHL  
LSDVTVRGFVAGATNILFRQQKHLSDAIVEVEEALIQIHDPRLKLLNPTTADLRFADYLVRHV TENRDD  
VFLDGTGWEGGDEWIRAQFAVYIHALLAATLQLDNEKILSDYGTTFVTAWKNTHNYRVWNSNKHPALAEI  
NPNHPFQGQYSVSDMKLRFSHSVQNSERGGKIGNVMVTTSRNVVQTGKAVGQSVGGAFSSAKTAMSSWLS  
TFTTTSQSLTEPPDEKP

TRTRPLEQKLI SEEDLAANDILDYKDDDDKV

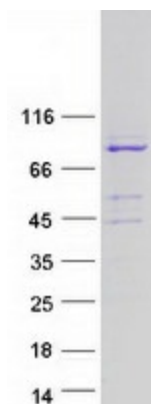
Tag:	C-Myc/DDK
Purity:	> 80% as determined by SDS-PAGE and Coomassie blue staining
Concentration:	>0.05 µg/µL as determined by microplate BCA method
Labeling Method:	Labeled with [U- 13C6, 15N4]-L-Arginine and [U- 13C6, 15N2]-L-Lysine
Buffer:	25 mM Tris-HCl, 100 mM glycine, pH 7.3
Storage:	Store at -80°C. Avoid repeated freeze-thaw cycles.
Stability:	Stable for 3 months from receipt of products under proper storage and handling conditions.
RefSeq:	<a href="#">NP_055875</a>
RefSeq Size:	2353



[View online »](#)

RefSeq ORF:	1944
Synonyms:	KIAA0241
Locus ID:	23080
UniProt ID:	<a href="#">Q8NBF6</a> , <a href="#">A0A024RA36</a>
Cytogenetics:	7p14.3
Summary:	Functions in cell migration.[UniProtKB/Swiss-Prot Function]

### Product images:



Coomassie blue staining of purified AVL9 protein (Cat# [TP316339]). The protein was produced from HEK293T cells transfected with AVL9 cDNA clone (Cat# [RC216339]) using MegaTran 2.0 (Cat# [TT210002]).