

Product datasheet for PH316329

C18orf34 (CCDC178) (NM_198995) Human Mass Spec Standard

Product data:

Product Type:	Mass Spec Standards
Description:	C18orf34 MS Standard C13 and N15-labeled recombinant protein (NP_945346)
Species:	Human
Expression Host:	HEK293
Expression cDNA Clone or AA Sequence:	RC216329
Predicted MW:	97.4 kDa
Protein Sequence:	>RC216329 representing NM_198995 Red=Cloning site Green=Tags(s)

MTENKTVSSSTRDDQTNIGLTCQEVKALREKAWSRTEGNAMESSQLVLYGASKENSEGFHESKMTNTEG
VNGKIYFSYPCRRHSCAVVNIPAPCVNKMISHIQDVESKIQEHLKRFETSFEWWSRTSSTKDLKEDWSVT
TPVKEVKPGEKRDEKCEPELKQEMETLLSEAIRLIKSLTDRADAEALQQRSRKNMINMKIDSWSVWKL
QELPLAVQKEHEAYLSDVIELQWHLLEDKANQLQHFQKQTELEENAKIQADIDYMNEHGPLLDSKQNGE
LQDLKNHYKKMEVMDLHRKVNEELEALEACENARLKAQQIKKEEIDKDIYQDEKTI EAYKREIYQLNSL
FDHYSSVINVTNIEEKEEEVTEAIRETKSSKNELHSLSKMLEDLRRVYDQLTWKQKSHENQYLEAVND
FYAAKKTWDIELSDVAKDFSAISLACTKLTEDNKKLEIDINKITVKTNESIRKSKYSEIKYLTIMKLLK
NDKHLKNIYKEAYRIGTLFHLTKHKTDEMEDIKAEVRRKFKGREFLKKLTQGEVAAGMVLQKQLYSIYE
VQALERKELIKNRAICAMSLAELQEPLQLLEDAERIRSLDKEHSVSKRSALFKDLEATKSKTMIFYAKI
NELNEELKAKKEEKSFQDTLEILKNKFITMRFKREHAQTVFDHYMQEKKDCEERIFEEDQFRVLLAVR
QKTLQDTQKIIADSLEENRLAQEQQLQITFLKEKDNFYIYDKQLSLDTSIRDKKQLCQLQRRMHTLW
QEHFKL VVLF SQMRLANFQTDSQESIQLAVQEESSNLMQHILGFFQTLTDGTCENDG

TRTRPLEQKLI SEEDLAANDILDYKDDDDKV

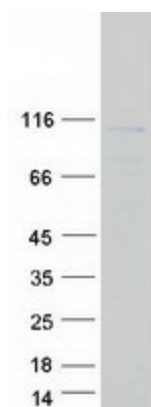
Tag:	C-Myc/DDK
Purity:	> 80% as determined by SDS-PAGE and Coomassie blue staining
Concentration:	>0.05 µg/µL as determined by microplate BCA method
Labeling Method:	Labeled with [U- ¹³ C ₆ , ¹⁵ N ₄]-L-Arginine and [U- ¹³ C ₆ , ¹⁵ N ₂]-L-Lysine
Buffer:	25 mM Tris-HCl, 100 mM glycine, pH 7.3
Storage:	Store at -80°C. Avoid repeated freeze-thaw cycles.
Stability:	Stable for 3 months from receipt of products under proper storage and handling conditions.
RefSeq:	NP_945346



[View online >](#)

RefSeq Size:	3087
RefSeq ORF:	2487
Synonyms:	C18orf34
Locus ID:	374864
UniProt ID:	Q5BJE1 , A1L4G8
Cytogenetics:	18q12.1

Product images:



Coomassie blue staining of purified CCDC178 protein (Cat# [TP316329]). The protein was produced from HEK293T cells transfected with CCDC178 cDNA clone (Cat# [RC216329]) using MegaTran 2.0 (Cat# [TT210002]).