

Product datasheet for PH316303

RAB6B (NM_016577) Human Mass Spec Standard

Product data:

| | |
|---------------------------------------|--|
| Product Type: | Mass Spec Standards |
| Description: | RAB6B MS Standard C13 and N15-labeled recombinant protein (NP_057661) |
| Species: | Human |
| Expression Host: | HEK293 |
| Expression cDNA Clone or AA Sequence: | RC216303 |
| Predicted MW: | 23.3 kDa |
| Protein Sequence: | >RC216303 representing NM_016577 Red=Cloning site Green=Tags(s) MSAGGDFGNPLRKFVLVFLGSEQSVGKTSLITRFMYDSFDNTYQATIGIDFLSKTMYLEDRTVRLQLWDTA GQERFRSLIPSYIRDSTVAVVVYDITNLNSFQQTSKWIDDVTRTERGSDVIIMLVGNKTDLADKRQITIEE GEQRAKELSVMF IETSAKTGYNVKQLFRRVASALPGMENVQEKSKEGMIDIKLDKPQEPPEGGCSC TRTRPLEQKLISEEDLAANDILDYKDDDDKV |
| Tag: | C-Myc/DDK |
| Purity: | > 80% as determined by SDS-PAGE and Coomassie blue staining |
| Concentration: | >0.05 µg/µL as determined by microplate BCA method |
| Labeling Method: | Labeled with [U- ¹³ C ₆ , ¹⁵ N ₄]-L-Arginine and [U- ¹³ C ₆ , ¹⁵ N ₂]-L-Lysine |
| Buffer: | 25 mM Tris-HCl, 100 mM glycine, pH 7.3 |
| Storage: | Store at -80°C. Avoid repeated freeze-thaw cycles. |
| Stability: | Stable for 3 months from receipt of products under proper storage and handling conditions. |
| RefSeq: | NP_057661 |
| RefSeq Size: | 5561 |
| RefSeq ORF: | 624 |
| Locus ID: | 51560 |
| UniProt ID: | Q9NRW1 |
| Cytogenetics: | 3q22.1 |

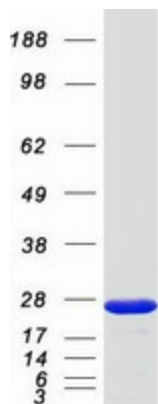


[View online »](#)

Summary: Seems to have a role in retrograde membrane traffic at the level of the Golgi complex. May function in retrograde transport in neuronal cells.[UniProtKB/Swiss-Prot Function]

Protein Families: Druggable Genome

Product images:



Coomassie blue staining of purified RAB6B protein (Cat# [TP316303]). The protein was produced from HEK293T cells transfected with RAB6B cDNA clone (Cat# [RC216303]) using MegaTran 2.0 (Cat# [TT210002]).