

Product datasheet for PH316285

NY-ESO-1 (CTAG1A) (NM_139250) Human Mass Spec Standard

Product data:

Product Type:	Mass Spec Standards
Description:	CTAG1A MS Standard C13 and N15-labeled recombinant protein (NP_640343)
Species:	Human
Expression Host:	HEK293
Expression cDNA Clone or AA Sequence:	RC216285
Predicted MW:	18 kDa
Protein Sequence:	>RC216285 protein sequence Red=Cloning site Green=Tags(s) MQAEGRGTGGSTGDADGPGGPGIPDGPNGAGGPEAGATGGRGPRGAGAARASGPGGGAPRGPHGGAAS GLNGCCRCGARGPESRLLLEFYLA MPFATPMEAE LARRSLAQDAPPLVPVGVLLKEFTVSGNILTIRLTAA DHRQLQLSISSCLQQLSLLMWITQCFLPVFLAQPPSGQRR TRTRPLEQKLI SEEDLAANDILDYKDDDDKV
Tag:	C-Myc/DDK
Purity:	> 80% as determined by SDS-PAGE and Coomassie blue staining
Concentration:	>0.05 µg/µL as determined by microplate BCA method
Labeling Method:	Labeled with [U- 13C6, 15N4]-L-Arginine and [U- 13C6, 15N2]-L-Lysine
Buffer:	25 mM Tris-HCl, 100 mM glycine, pH 7.3
Storage:	Store at -80°C. Avoid repeated freeze-thaw cycles.
Stability:	Stable for 3 months from receipt of products under proper storage and handling conditions.
RefSeq:	NP_640343
RefSeq Size:	748
RefSeq ORF:	540
Synonyms:	CT6.1; ESO1; LAGE-2; LAGE2A; NY-ESO-1
Locus ID:	246100
UniProt ID:	P78358



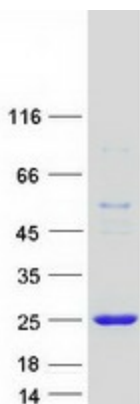
[View online »](#)

Cytogenetics: Xq28

Summary: The protein encoded by this gene is a tumor cell antigen found in various types of cancers, which makes it a good candidate for a cancer vaccine. This gene is also highly expressed in normal ovary and testis tissues. An identical copy of this gene is found on the same chromosome. [provided by RefSeq, Dec 2015]

Protein Families: Druggable Genome

Product images:



Coomassie blue staining of purified CTAG1A protein (Cat# [TP316285]). The protein was produced from HEK293T cells transfected with CTAG1A cDNA clone (Cat# [RC216285]) using MegaTran 2.0 (Cat# [TT210002]).