

Product datasheet for PH316275

POT1 (NM_015450) Human Mass Spec Standard

Product data:

| | |
|---------------------------------------|--|
| Product Type: | Mass Spec Standards |
| Description: | POT1 MS Standard C13 and N15-labeled recombinant protein (NP_056265) |
| Species: | Human |
| Expression Host: | HEK293 |
| Expression cDNA Clone or AA Sequence: | RC216275 |
| Predicted MW: | 71.3 kDa |
| Protein Sequence: | >RC216275 representing NM_015450 Red=Cloning site Green=Tags(s) |

MSLVPATNYIYTPLNQLKGGTIVNVYGVVKFKPPYLSKGTDYCSVVTIVDQTNVKLTCLLFSGNYEALP
I IYKNGDIVRFHRLKIQVYKQITSSGFASLTFEGTLGAPIIPRTSSKYFNFTTEDHKMVEALRVWA
STHMSPSWTLLKCDVQPMQYFDLTCQLLGAEVDGASFLLKVVWDGTRTPFPSSWRVLIQDLVLEGDLSHI
HRLQNLIDILVYDNHVVARSCLKVGSFLRIYSLHTKLQSMNSENQTMLSLEFHLHGGSYGRGIRVLP
SNSDQVQLKKDLESANLTANQHSQVQSEPDDSFSSGSVSLYEVEQCQQLSATILTDHQYLERTPLCA
ILKQKAPQQYRIRAKLRSYKPRRLFQSVKLHCPKCHLLQEVPHGEDLDIIFQDGATKTPVVKLQNTSLYD
SKIWTTKNQKGRKVAVHFVKNNGILPLSNECLLLIEGGTLEICKLSNKFNSVIPVRSGHEDLELLDLSA
PFLIQGTIHHYGCKQCSSLRSIQNLNSLVDKTSWIPSSVAEALGIVPLQYVFMFTLDDGTGVLEAYLM
DSDKFFQIPASEVLMDDDLQKSDMIMDMFCPPGIKIDAYPWLECFIKSYNVTNGTDNQICYQIFDITVA
EDVI

TRTRPLEQKLISEEDLAANDILDYKDDDDKV

| | |
|------------------|--|
| Tag: | C-Myc/DDK |
| Purity: | > 80% as determined by SDS-PAGE and Coomassie blue staining |
| Concentration: | >0.05 µg/µL as determined by microplate BCA method |
| Labeling Method: | Labeled with [U- 13C6, 15N4]-L-Arginine and [U- 13C6, 15N2]-L-Lysine |
| Buffer: | 25 mM Tris-HCl, 100 mM glycine, pH 7.3 |
| Storage: | Store at -80°C. Avoid repeated freeze-thaw cycles. |
| Stability: | Stable for 3 months from receipt of products under proper storage and handling conditions. |
| RefSeq: | NP_056265 |
| RefSeq Size: | 2631 |



[View online »](#)

RefSeq ORF: 1902

Synonyms: CMM10; GLM9; HPOT1

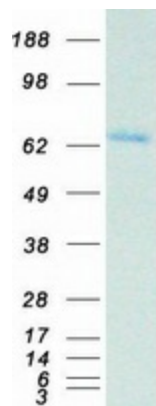
Locus ID: 25913

UniProt ID: [Q9NUX5](#), [A0A024R739](#)

Cytogenetics: 7q31.33

Summary: This gene is a member of the telombin family and encodes a nuclear protein involved in telomere maintenance. Specifically, this protein functions as a member of a multi-protein complex that binds to the TTAGGG repeats of telomeres, regulating telomere length and protecting chromosome ends from illegitimate recombination, catastrophic chromosome instability, and abnormal chromosome segregation. Increased transcriptional expression of this gene is associated with stomach carcinogenesis and its progression. Alternatively spliced transcript variants have been described. [provided by RefSeq, Jul 2008]

Product images:



Coomassie blue staining of purified POT1 protein (Cat# [TP316275]). The protein was produced from HEK293T cells transfected with POT1 cDNA clone (Cat# [RC216275]) using MegaTran 2.0 (Cat# [TT210002]).