

## Product datasheet for PH316236

### PDE6 gamma (PDE6G) (NM\_002602) Human Mass Spec Standard

#### Product data:

Product Type:	Mass Spec Standards
Description:	PDE6G MS Standard C13 and N15-labeled recombinant protein (NP_002593)
Species:	Human
Expression Host:	HEK293
Expression cDNA Clone or AA Sequence:	RC216236
Predicted MW:	9.6 kDa
Protein Sequence:	>RC216236 protein sequence Red=Cloning site Green=Tags(s)  MNLEPPKAEFRSATRVAGGPVTPRKGPPKFKQRQTRQFKSKPPKKGVQGFDDIPGMEGLGTDITVICPW EAFNHLELHELAAQYGII  TRTRPLEQKLISEEDLAANDILDYKDDDDKV
Tag:	C-Myc/DDK
Purity:	> 80% as determined by SDS-PAGE and Coomassie blue staining
Concentration:	>0.05 µg/µL as determined by microplate BCA method
Labeling Method:	Labeled with [U- 13C6, 15N4]-L-Arginine and [U- 13C6, 15N2]-L-Lysine
Buffer:	25 mM Tris-HCl, 100 mM glycine, pH 7.3
Storage:	Store at -80°C. Avoid repeated freeze-thaw cycles.
Stability:	Stable for 3 months from receipt of products under proper storage and handling conditions.
RefSeq:	<a href="#">NP_002593</a>
RefSeq Size:	1064
RefSeq ORF:	261
Synonyms:	PDEG; RP57
Locus ID:	5148
UniProt ID:	<a href="#">P18545</a>
Cytogenetics:	17q25.3



[View online »](#)

**Summary:**

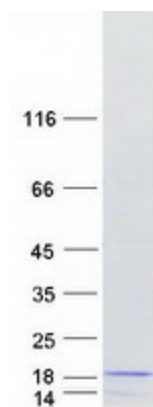
This gene encodes the gamma subunit of cyclic GMP-phosphodiesterase, which is composed of alpha- and beta- catalytic subunits and two identical, inhibitory gamma subunits. This gene is expressed in rod photoreceptors and functions in the phototransduction signaling cascade. It is also expressed in a variety of other tissues, and has been shown to regulate the c-Src protein kinase and G-protein-coupled receptor kinase 2. Alternative splicing results in multiple transcript variants. [provided by RefSeq, Feb 2009]

**Protein Families:**

Druggable Genome

**Protein Pathways:**

Progesterone-mediated oocyte maturation, Purine metabolism

**Product images:**

Coomassie blue staining of purified PDE6G protein (Cat# [TP316236]). The protein was produced from HEK293T cells transfected with PDE6G cDNA clone (Cat# [RC216236]) using MegaTran 2.0 (Cat# [TT210002]).