

Product datasheet for PH316229

NHLRC2 (NM_198514) Human Mass Spec Standard

Product data:

Product Type:	Mass Spec Standards
Description:	NHLRC2 MS Standard C13 and N15-labeled recombinant protein (NP_940916)
Species:	Human
Expression Host:	HEK293
Expression cDNA Clone or AA Sequence:	RC216229
Predicted MW:	79.3 kDa
Protein Sequence:	>RC216229 representing NM_198514 Red=Cloning site Green=Tags(s)

MAAPGGRGRSLSGLLPAQTSLEYALLDAVTQEQKDSL VYQYLQKVDGWEQDL SVPEFPEGLEWLNTEEPI
SVYKDL CGKIVLDFFTYCCINCIHLLPDLHALEHTYSDKDGLLIIGVHSAKFPNEKVLNLIKSAVLRYN
ITHPMVNDADASLWQELEVSCWPTLVILGPRGNMLFSLIGEGHKDKLFLYTSIALKYYKDRGQIRDNKIG
IKLYKDSLPPSPLLFPQKVTVDQVTDRLVIADTGHHRILVWKNQIQYSIGGPNPGRKDGIFSESTFNS
PQGVAIMNIIYVADTENHLIRKIDLEAEKVSTVAGIGIQGTDKEGGAKGEQQPISSPWDVVFSGTSGSEV
QRGDILWIAMAGTHQIWALLLDSGKLPKKNELTKGTCLRFAGSGNEENRNNAYPHKAGFAQPSGLSLASE
DPWSCLFVADSESSTVRTVSLKDGAVKHLVGGERDPMNLFAGDVGVDGINAKLQHPLGVTWDDKRNLLY
VADSYNHKIKVDPKTKNCTTLAGTGDTNNVTSSSFTESTFNPEGGLCIGENGELLYVADTNNHQIKVMD
LETKMVSVLPFRSENAVVDGPFLVEKQKTLPKLPKSAPSIRLSPVTACAGQTLQFKLRLDLPSSGSKLTE
GVSSCWFLTAEGNEWLLQGQIAAGDIENISSQPTISLQIPDDCLSLAIVSVSVFLYCYCSADSSACMMKA
ILFSQPLQITDTQQGCIAPVELRYVF

TRTRPLEQKLISEEDLAANDILDYKDDDDKV

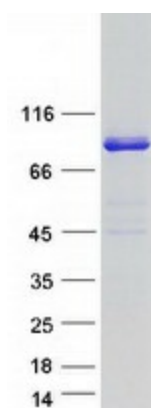
Tag:	C-Myc/DDK
Purity:	> 80% as determined by SDS-PAGE and Coomassie blue staining
Concentration:	>0.05 µg/µL as determined by microplate BCA method
Labeling Method:	Labeled with [U- 13C6, 15N4]-L-Arginine and [U- 13C6, 15N2]-L-Lysine
Buffer:	25 mM Tris-HCl, 100 mM glycine, pH 7.3
Storage:	Store at -80°C. Avoid repeated freeze-thaw cycles.
Stability:	Stable for 3 months from receipt of products under proper storage and handling conditions.
RefSeq:	<u>NP_940916</u>



[View online »](#)

RefSeq Size:	2550
RefSeq ORF:	2178
Synonyms:	FINCA
Locus ID:	374354
UniProt ID:	Q8NBF2 , Q7Z658
Cytogenetics:	10q25.3
Summary:	Required for normal embryonic development.[UniProtKB/Swiss-Prot Function]
Protein Families:	Druggable Genome

Product images:



Coomassie blue staining of purified NHLRC2 protein (Cat# [TP316229]). The protein was produced from HEK293T cells transfected with NHLRC2 cDNA clone (Cat# [RC216229]) using MegaTran 2.0 (Cat# [TT210002]).