

## Product datasheet for PH316226

### IGF2BP1 (NM\_006546) Human Mass Spec Standard

#### Product data:

Product Type:	Mass Spec Standards
Description:	IGF2BP1 MS Standard C13 and N15-labeled recombinant protein (NP_006537)
Species:	Human
Expression Host:	HEK293
Expression cDNA Clone or AA Sequence:	RC216226
Predicted MW:	63.3 kDa
Protein Sequence:	>RC216226 representing NM_006546 Red=Cloning site Green=Tags(s)

MNKLYIGNL NESVTPADLEKVF AEHKISYSGQFLVKSGYAFVDCPDEHWAMKAIETFSGKVELQGKRLEI  
EHSVPPKQSRKIQRNIPPQLRWEVLD SLLAQYGTVENCEQVNTSE TAVVNVYTSNREQTRQAIMKLN  
GHQLENHALKVSYPDEQIAQGPENRRGGFGSRGQPRQGSPVAAGAPAKQQQVDIPLRLLVPTQYVGAI  
IGKEGATIRNITKQTQSKIDVHRKENAGAAEKASVHSTPEGCSSACKMILEIMHKEAKDTKTADEVPLK  
ILAHNNFVGR LIGKEGRNLK KVEQDTETKITISSLQDL TLYNPERTITVKGAIENCCRAEQEIMKKVREA  
YENDVAAMSLQSHLIPGLNLA AVGLFPASSAVPPPSSVTGAAPYSSFMQAPEQEMQVFI PAQAVGAI  
IGKKGQHIKQLSRFASASIKIAPPETPDSKVRMVIITGPPEAQFKAQGR IYGK LKEENFFGPKKEEVKLET  
HIRVPASAAGRVIKGGGKTVNELQNL TAAEVVPRDQTPDENDQVIVK IIGHFYASQMAQRKIRDILAQV  
KQQHQKQSNQAQARRK

TRTRPLEQKLISEEDLAANDILDYKDDDDKV

Tag:	C-Myc/DDK
Purity:	> 80% as determined by SDS-PAGE and Coomassie blue staining
Concentration:	>0.05 µg/µL as determined by microplate BCA method
Labeling Method:	Labeled with [U- <sup>13</sup> C <sub>6</sub> , <sup>15</sup> N <sub>4</sub> ]-L-Arginine and [U- <sup>13</sup> C <sub>6</sub> , <sup>15</sup> N <sub>2</sub> ]-L-Lysine
Buffer:	25 mM Tris-HCl, 100 mM glycine, pH 7.3
Storage:	Store at -80°C. Avoid repeated freeze-thaw cycles.
Stability:	Stable for 3 months from receipt of products under proper storage and handling conditions.
RefSeq:	<a href="#">NP_006537</a>
RefSeq Size:	8769
RefSeq ORF:	1731



[View online »](#)

**Synonyms:** CRD-BP; CRDBP; IMP-1; IMP1; VICKZ1; ZBP1

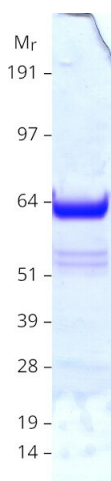
**Locus ID:** 10642

**UniProt ID:** [Q9NZI8](#)

**Cytogenetics:** 17q21.32

**Summary:** This gene encodes a member of the insulin-like growth factor 2 mRNA-binding protein family. The protein encoded by this gene contains four K homology domains and two RNA recognition motifs. It functions by binding to the mRNAs of certain genes, including insulin-like growth factor 2, beta-actin and beta-transducin repeat-containing protein, and regulating their translation. Two transcript variants encoding different isoforms have been found for this gene. [provided by RefSeq, May 2009]

### Product images:



Coomassie blue staining of purified IGF2BP1 protein (Cat# [TP316226]). The protein was produced from HEK293T cells transfected with IGF2BP1 cDNA clone (Cat# [RC216226]) using MegaTran 2.0 (Cat# [TT210002]).