

## Product datasheet for PH316218

### WDR5 (NM\_017588) Human Mass Spec Standard

#### Product data:

Product Type:	Mass Spec Standards
Description:	WDR5 MS Standard C13 and N15-labeled recombinant protein (NP_060058)
Species:	Human
Expression Host:	HEK293
Expression cDNA Clone or AA Sequence:	RC216218
Predicted MW:	36.4 kDa
Protein Sequence:	>RC216218 representing NM_017588 Red=Cloning site Green=Tags(s)

MATEEKKPETEAARAQPTPSSSATQSKPTVPKPNYALKFTLAGHTKAVSSVKFSPNGEWLASSADKLIK  
IWGAYDGKFEKTIISGHKLGISDVAWSSDNLVSASDDKTLKIWDVSSGKCLKTLKGHSNYVFCNFPQ  
SNLIVSGSFDESRIWDVKTGKCLKTLPAHSDPVS AVHFNRDGLIVSSSYDGLCRIWDTASGQCLKTLI  
DDDNPPVSFVKFSPNGKYILAATLDNTLKLWDYSKGKCLKTYTGHKNEKYCIFANFSVTGGKWIVSGSED  
NLVYIWNLQTKIIVQKLQGHTDVVISTACHPTENIIASAALENDKTIKLWKSDC

TRTRPLEQKLI SEEDLAANDILDYKDDDDKV

Tag:	C-Myc/DDK
Purity:	> 80% as determined by SDS-PAGE and Coomassie blue staining
Concentration:	>0.05 µg/µL as determined by microplate BCA method
Labeling Method:	Labeled with [U- <sup>13</sup> C <sub>6</sub> , <sup>15</sup> N <sub>4</sub> ]-L-Arginine and [U- <sup>13</sup> C <sub>6</sub> , <sup>15</sup> N <sub>2</sub> ]-L-Lysine
Buffer:	25 mM Tris-HCl, 100 mM glycine, pH 7.3
Storage:	Store at -80°C. Avoid repeated freeze-thaw cycles.
Stability:	Stable for 3 months from receipt of products under proper storage and handling conditions.
RefSeq:	<u><a href="#">NP_060058</a></u>
RefSeq Size:	3163
RefSeq ORF:	1002
Synonyms:	BIG-3; CFAP89; SWD3
Locus ID:	11091



[View online »](#)

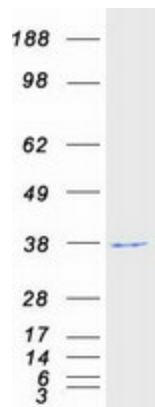
UniProt ID: [P61964](#)

Cytogenetics: 9q34.2

**Summary:** This gene encodes a member of the WD repeat protein family. WD repeats are minimally conserved regions of approximately 40 amino acids typically bracketed by gly-his and trp-aspartic acid (GH-WD), which may facilitate formation of heterotrimeric or multiprotein complexes. Members of this family are involved in a variety of cellular processes, including cell cycle progression, signal transduction, apoptosis, and gene regulation. This protein contains 7 WD repeats. Alternatively spliced transcript variants encoding the same protein have been identified. [provided by RefSeq, Jul 2008]

**Protein Families:** Druggable Genome

### Product images:



Coomassie blue staining of purified WDR5 protein (Cat# [TP316218]). The protein was produced from HEK293T cells transfected with WDR5 cDNA clone (Cat# [RC216218]) using MegaTran 2.0 (Cat# [TT210002]).