

## Product datasheet for PH316137

### KIF3C (NM\_002254) Human Mass Spec Standard

#### Product data:

Product Type:	Mass Spec Standards
Description:	KIF3C MS Standard C13 and N15-labeled recombinant protein (NP_002245)
Species:	Human
Expression Host:	HEK293
Expression cDNA Clone or AA Sequence:	RC216137
Predicted MW:	89.5 kDa
Protein Sequence:	>RC216137 protein sequence Red=Cloning site Green=Tags(s)

MASKTKASEALKVVARCRPLSRKEEAAGHEQILTMDVKLGQVTLRNPRAAPGELPKTFTFDVAVYDASSKQ  
ADLYDETVRPLIDSVLQGFNGTVFAYGQTGTGKTYTMQGTWVEPELRGVIPNAFEHIFTHISRSQSQYLL  
VRASYLEIYQEEIRDLLSKEPGKRELEKENPETGVYIKDLSSFVTKNVKEIEHVMNLGNQTRAVGSTHMN  
EVSSRSHAIIFIITVECSERGSQGDHIRVGLNLDLAGSERQNKAGPNTAGGAATPSSGGGGGGGGSGG  
GAGGERPKEASKINLSALGNVIAALAGNRSTHIPPYRDSKLRLLQDSLGGNAKTIMVATLGPASHSYD  
ESLSTLRFANRAKNIKPKRVNEDPKDTLLREFQEEIARLKAQLEKRGMLGKRPRRKSRRKKAVSAPPG  
YPEGPVIEAWVAEEEDDNNNNHRPPQPILESALEKNMENYLQEQRLEEEKAAIQDDRSLVSEEKQKLL  
EEKEKMLEDLRREQQATELLAAKYKAMESKLLIGGRNIMDHTNEQQKMLELKRQIEAEQRREREMQQEM  
MLRDEETMELRGTYTSLQQEVEVKTKLKLKLYAKLQAVKAEIQDQHDEYIRVRQDLEEAQNEQTRELKLL  
YLIIEINFIPPEEKNIMNRLFLDCEEEQWKQPLVPAGVSSSQMKRPTS AVGYKRPISQYARVAMAMGS  
HPRYRAENIMFLELDVSPPAVFEMEFSDHQEQDPRALHMERLMRLDSFLERPSTSKVRKRSRWCQSPQRP  
PPSTTHASLASASLRPATVADHE

TRTRPLEQKLI SEEDLAANDILDYKDDDDKV

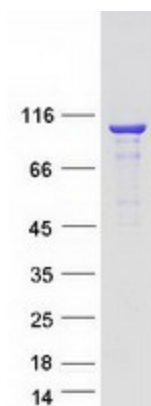
Tag:	C-Myc/DDK
Purity:	> 80% as determined by SDS-PAGE and Coomassie blue staining
Concentration:	>0.05 µg/µL as determined by microplate BCA method
Labeling Method:	Labeled with [U- <sup>13</sup> C <sub>6</sub> , <sup>15</sup> N <sub>4</sub> ]-L-Arginine and [U- <sup>13</sup> C <sub>6</sub> , <sup>15</sup> N <sub>2</sub> ]-L-Lysine
Buffer:	25 mM Tris-HCl, 100 mM glycine, pH 7.3
Storage:	Store at -80°C. Avoid repeated freeze-thaw cycles.
Stability:	Stable for 3 months from receipt of products under proper storage and handling conditions.
RefSeq:	<a href="#">NP_002245</a>



[View online »](#)

RefSeq Size:	5431
RefSeq ORF:	2379
Locus ID:	3797
UniProt ID:	<a href="#">Q14782</a> , <a href="#">A2RU78</a>
Cytogenetics:	2p23.3
Summary:	Microtubule-based anterograde translocator for membranous organelles.[UniProtKB/Swiss-Prot Function]
Protein Families:	Druggable Genome

### Product images:



Coomassie blue staining of purified KIF3C protein (Cat# [TP316137]). The protein was produced from HEK293T cells transfected with KIF3C cDNA clone (Cat# [RC216137]) using MegaTran 2.0 (Cat# [TT210002]).