

## Product datasheet for PH316135

### cleavage stimulation factor (CSTF1) (NM\_001033522) Human Mass Spec Standard

#### Product data:

Product Type:	Mass Spec Standards
Description:	CSTF1 MS Standard C13 and N15-labeled recombinant protein (NP_001028694)
Species:	Human
Expression Host:	HEK293
Expression cDNA Clone or AA Sequence:	RC216135
Predicted MW:	48.4 kDa
Protein Sequence:	>RC216135 protein sequence Red=Cloning site Green=Tags(s)

MYRTKVGKDRQQLYKLIISQLLYDGYISIANGLINEIKPQSVCAPSEQLLHLIKLGMENDDTAVQYAIG  
RSDTVAPGTGIDLEFDADVQTMSPLEASEYETCYVTSHKGPCRVATYSRDGQLIATGSADASIKILDTTERM  
LAKSAMP I EVMMNETAQQNMENHPVIRTYDHYVDEVTCLAFHPTEQILASGSRDYTLKLFDYSKPSAKRA  
FKYIQEAEMLRISIFHPSGDFILVGTQHPTLRLYDINTFQCFVSCNPQDQHTDAICSVNYNSSANMYVTG  
SKDGCIKLWDGVSNRCITTFEKAHDGAEVCSAIFSKNSKYILSSGKDSVAKLWEISTGRTLVRVTGAGLS  
GRQVHRTQAVFNHTEDYVLLPDERTISLCCWDSRTAERRNLLSLGHNNIVRCIVHSPTNPGFMTCSDDFR  
ARFWYRRSTTD

TRTRPLEQKLI SEEDLAANDILDYKDDDDKV

Tag:	C-Myc/DDK
Purity:	> 80% as determined by SDS-PAGE and Coomassie blue staining
Concentration:	>0.05 µg/µL as determined by microplate BCA method
Labeling Method:	Labeled with [U- <sup>13</sup> C <sub>6</sub> , <sup>15</sup> N <sub>4</sub> ]-L-Arginine and [U- <sup>13</sup> C <sub>6</sub> , <sup>15</sup> N <sub>2</sub> ]-L-Lysine
Buffer:	25 mM Tris-HCl, 100 mM glycine, pH 7.3
Storage:	Store at -80°C. Avoid repeated freeze-thaw cycles.
Stability:	Stable for 3 months from receipt of products under proper storage and handling conditions.
RefSeq:	<a href="#">NP_001028694</a>
RefSeq Size:	2292
RefSeq ORF:	1293
Synonyms:	CstF-50; CstFp50



[View online »](#)

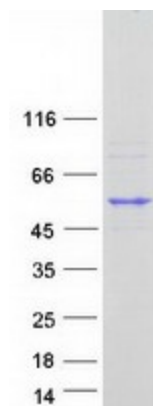
Locus ID: 1477

UniProt ID: [Q05048](#)

Cytogenetics: 20q13.2-q13.31

**Summary:** This gene encodes one of three subunits which combine to form cleavage stimulation factor (CSTF). CSTF is involved in the polyadenylation and 3'end cleavage of pre-mRNAs. Similar to mammalian G protein beta subunits, this protein contains transducin-like repeats. Several transcript variants with different 5' UTR, but encoding the same protein, have been found for this gene. [provided by RefSeq, Jul 2008]

### Product images:



Coomassie blue staining of purified CSTF1 protein (Cat# [TP316135]). The protein was produced from HEK293T cells transfected with CSTF1 cDNA clone (Cat# [RC216135]) using MegaTran 2.0 (Cat# [TT210002]).