

Product datasheet for PH316032

Semaphorin 3D (SEMA3D) (NM_152754) Human Mass Spec Standard

Product data:

Product Type:	Mass Spec Standards
Description:	SEMA3D MS Standard C13 and N15-labeled recombinant protein (NP_689967)
Species:	Human
Expression Host:	HEK293
Expression cDNA Clone or AA Sequence:	RC216032
Predicted MW:	89.5 kDa
Protein Sequence:	>RC216032 representing NM_152754 Red=Cloning site Green=Tags(s)

MNANKDERLKARSQDFHLFPALMMLSMTMLFLPVTGTLKQNIPLKLTYSKDLLLSNSCIPFLGSSEGLDF
QTLLEDEERGRLLLGAKDHFLLSLVDLNKNFKKIYWPAAKERVELCKLAGKDANTECANFIRVLQPYNK
THIYVCGTGAFHPICGYIDLGVYKEDIIFKLDTHNLESGRLKCPFDPPQPFASVMTDEYLYSGTASDFLG
KDTAFTTRSLGPTHDDHYIRTDISEHYWLNKAKFIGTFFIPDTYNPDDDKIYFFRESSQEGSTSDKTILS
RVGRVCKNDVGGQRSLINKWTTFLKARLICSIPGSDGADTYFDELQDIYLLPTRDERNPVYGVFTTSS
IFKGSVAVCVYSMADIRAVFNGPYAHKESADHRWVQYDGRIPYPRPGTSPSKTYDPLIKSTRDFPDDVISF
IKRHSVMYKSVYPVAGGPTFKRINVDYRLTQIVVDHVIAEDGQYDVMFLGTDIGTVLKVVSISKEKWME
EVLLEELQIFKHSIIILNMELESLKQQQLYIGSRDGLVQLSLHRCPTYGKACADCCCLARDPYCAWDGNACS
RYAPTSKRARRQDVKYGDPIQWQDIEDSISHEETADEKVIIFGIEFNSTFLECIPKSSQATIKWYIQRSG
DEHREELKPERIKTEYGLLIRSLQKQKDSGMYCKAQEHTFIHTIVKLTNLVIENEQMENTQRAEHEEG
KVKDLLAESRLRYKDYIQLSSPNFLDQYCEQMWHREKRRQRNKGKPKWKHMQEMKKRNRHRDLDE
LPRAVAT

TRTRPLEQKLISEEDLAANDILDYKDDDDKV

Tag:	C-Myc/DDK
Purity:	> 80% as determined by SDS-PAGE and Coomassie blue staining
Concentration:	>0.05 µg/µL as determined by microplate BCA method
Labeling Method:	Labeled with [U- ¹³ C ₆ , ¹⁵ N ₄]-L-Arginine and [U- ¹³ C ₆ , ¹⁵ N ₂]-L-Lysine
Buffer:	25 mM Tris-HCl, 100 mM glycine, pH 7.3
Storage:	Store at -80°C. Avoid repeated freeze-thaw cycles.
Stability:	Stable for 3 months from receipt of products under proper storage and handling conditions.
RefSeq:	NP_689967



[View online »](#)

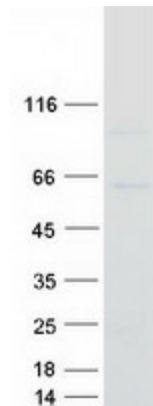
RefSeq Size: 6276
RefSeq ORF: 2331
Synonyms: coll-2; Sema-Z2
Locus ID: 223117
UniProt ID: [O95025](#)
Cytogenetics: 7q21.11

Summary: This gene encodes a member of the semaphorin III family of secreted signaling proteins that are involved in axon guidance during neuronal development. The encoded protein contains an N-terminal Sema domain, an immunoglobulin like domain and a C-terminal basic domain. The protein encoded by this gene binds neuropilin and plays an important role in cardiovascular development. [provided by RefSeq, Aug 2016]

Protein Families: Transmembrane

Protein Pathways: Axon guidance

Product images:



Coomassie blue staining of purified SEMA3D protein (Cat# [TP316032]). The protein was produced from HEK293T cells transfected with SEMA3D cDNA clone (Cat# [RC216032]) using MegaTran 2.0 (Cat# [TT210002]).