

Product datasheet for PH316028

Luteinizing Hormone beta (LHB) (NM_000894) Human Mass Spec Standard

Product data:

Product Type:	Mass Spec Standards
Description:	LHB MS Standard C13 and N15-labeled recombinant protein (NP_000885)
Species:	Human
Expression Host:	HEK293
Expression cDNA Clone or AA Sequence:	RC216028
Predicted MW:	15.35 kDa
Protein Sequence:	>RC216028 representing NM_000894 Red=Cloning site Green=Tags(s) MEMLQGLLLLLLLSMGGAWASREPLRPWCHPINAILAVEKEGCPVCITVNTTICAGYCPMMRVLQAVLP PLPQVVCTYRDVRFESIRLPGCPRGVPVVSFPVALSCRCGPCRRSTSDCGGPKDHPLTCDHPQLSGLLF L TRTRPLEQKLISEEDLAANDILDYKDDDDKV
Tag:	C-Myc/DDK
Purity:	> 80% as determined by SDS-PAGE and Coomassie blue staining
Concentration:	>0.05 µg/µL as determined by microplate BCA method
Labeling Method:	Labeled with [U- 13C6, 15N4]-L-Arginine and [U- 13C6, 15N2]-L-Lysine
Buffer:	25 mM Tris-HCl, 100 mM glycine, pH 7.3
Storage:	Store at -80°C. Avoid repeated freeze-thaw cycles.
Stability:	Stable for 3 months from receipt of products under proper storage and handling conditions.
RefSeq:	NP_000885
RefSeq Size:	523
RefSeq ORF:	423
Synonyms:	CGB4; HH23; LSH-B; LSH-beta
Locus ID:	3972
UniProt ID:	P01229 , A0A0F7RQE6



[View online »](#)

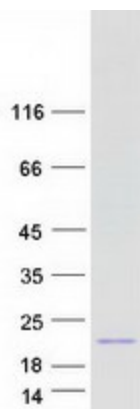
Cytogenetics: 19q13.33

Summary: This gene is a member of the glycoprotein hormone beta chain family and encodes the beta subunit of luteinizing hormone (LH). Glycoprotein hormones are heterodimers consisting of a common alpha subunit and an unique beta subunit which confers biological specificity. LH is expressed in the pituitary gland and promotes spermatogenesis and ovulation by stimulating the testes and ovaries to synthesize steroids. The genes for the beta chains of chorionic gonadotropin and for luteinizing hormone are contiguous on chromosome 19q13.3. Mutations in this gene are associated with hypogonadism which is characterized by infertility and pseudohermaphroditism. [provided by RefSeq, Jul 2008]

Protein Families: Druggable Genome, Secreted Protein

Protein Pathways: GnRH signaling pathway, Neuroactive ligand-receptor interaction

Product images:



Coomassie blue staining of purified LHB protein (Cat# [TP316028]). The protein was produced from HEK293T cells transfected with LHB cDNA clone (Cat# [RC216028]) using MegaTran 2.0 (Cat# [TT210002]).