

Product datasheet for PH315998

SYTL5 (NM_138780) Human Mass Spec Standard

Product data:

Product Type:	Mass Spec Standards
Description:	SYTL5 MS Standard C13 and N15-labeled recombinant protein (NP_620135)
Species:	Human
Expression Host:	HEK293
Expression cDNA Clone or AA Sequence:	RC215998
Predicted MW:	81.3 kDa
Protein Sequence:	>RC215998 representing NM_138780 Red=Cloning site Green=Tags(s)

MSKNSEFINLSFLLDHEKEMILGVLKRDEYLKKVEDKRIKRLKNELLEAKRRSGKTQQEASRVCVHCHRN
LGLIFDRGDPQCACSLRVCRECRVAGPNGSWKCTVCDKIAQLRIITGEWFFEEKAKRFKQVNVLGTDVVR
QSILRRSPGAEVQSQEQRQDAEKSDTSPVAGKASHDGPKRKGFLLSKFRSATRGEIITPKTDTGRSY
SLDLDGQHFRSLKSPPGSDRGSTGSSDLNDQEPGPRTPKSSRSNGVTPGTQSSPAPSTRVTSVISREYG
FENSMDLAAIEGTSQELTKSHRNTSGTPSIAVSGTSLSSDQSRSELDLSESFTEDSEDVTSIRSKSVPG
ALDKDSLEETEESIDALVSSQLSTNTHRLASGLSTTSLNSMMSVYSETGDYGNVKVSGEILLHISYCYKT
GGLYIFVKNCRNLAIGDEKKQRTDAYVKSYPDKSRNNKRKTKIRTGTNPEFNETLKYTISHTQLETRT
LQLSVWHYDRFGRNSFLGEVEIPFDSWNFENPTDEWFLQPKVEFAPDIGLQYKGELTVVLYRIPPEENL
MLPPEQLQGNKTFKKGKKKESPVISGGILEVFIKEAKNLTAVKSGTSDSFVKGYLLPDDSKATKHKTLV
IKKSVNPQWNHTFMFSGIHPQDIKNVCLELTIWDKEAFSSNIFLGGVRLNSGSGVSHGKNVDWMDSQGEE
QRLWQKMANNPGTPEFEGVLMRSSMGKCR

TRTRPLEQKLISEEDLAANDILDYKDDDDKV

Tag:	C-Myc/DDK
Purity:	> 80% as determined by SDS-PAGE and Coomassie blue staining
Concentration:	>0.05 µg/µL as determined by microplate BCA method
Labeling Method:	Labeled with [U- 13C6, 15N4]-L-Arginine and [U- 13C6, 15N2]-L-Lysine
Buffer:	25 mM Tris-HCl, 100 mM glycine, pH 7.3
Storage:	Store at -80°C. Avoid repeated freeze-thaw cycles.
Stability:	Stable for 3 months from receipt of products under proper storage and handling conditions.
RefSeq:	NP_620135

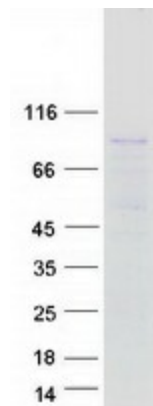


[View online »](#)

RefSeq Size:	2193
RefSeq ORF:	2190
Synonyms:	slp5
Locus ID:	94122
UniProt ID:	Q8TDW5
Cytogenetics:	Xp11.4

Summary: The protein encoded by this gene belongs to the synaptotagmin-like (Slp) protein family, which contains a unique homology domain at the N-terminus, referred to as the Slp homology domain (SHD). The SHD functions as a binding site for Rab27A, which plays a role in protein transport. Expression of this gene is restricted to placenta and liver, suggesting that it might be involved in Rab27A-dependent membrane trafficking in specific tissues. Alternatively spliced transcript variants encoding different isoforms have been found for this gene. [provided by RefSeq, Sep 2009]

Product images:



Coomassie blue staining of purified SYTL5 protein (Cat# [TP315998]). The protein was produced from HEK293T cells transfected with SYTL5 cDNA clone (Cat# [RC215998]) using MegaTran 2.0 (Cat# [TT210002]).