

## Product datasheet for PH315995

### Estrogen Related Receptor beta (ESRRB) (NM\_004452) Human Mass Spec Standard

#### Product data:

Product Type:	Mass Spec Standards
Description:	ESRRB MS Standard C13 and N15-labeled recombinant protein (NP_004443)
Species:	Human
Expression Host:	HEK293
Expression cDNA Clone or AA Sequence:	RC215995
Predicted MW:	56 kDa
Protein Sequence:	>RC215995 representing NM_004452 Red=Cloning site Green=Tags(s)

MSSDDRHLGSSCGSFIKTEPSSPSSGIDALSHHSPSGSSDASGGFGLALGTHANGLDSPPMFAGAGLGGT  
PCRKSYEDCASGIMEDSAIKCEYMLNAIPKRLCLVCGDIASGYHYGVASCEACKAFFKRTIQGNIEYSCP  
ATNECEITKRRRKSCQACRFMKCLKVGMLEKGVRLDRVRGGRQYKRRLDSESSPYLSLQISPPAKKPLT  
KIVSYLLVAEPDKLYAMPPPGMPEGDIKALTTLCDLADRELVVIIGWAKHIPGSSLSLGDQMSLLQSAW  
MEILILGIVYRSLPYDDKLVAEDYIMDEEHSRLAGLLELYRAILQLVRRYKCLKVEKEEFVTLKALALA  
NSDSMYIEDLEAVQKLQDLLHEALQDYELSORHEEPWRTGKLLLTLPLLRQTAAKAVQHFYSVKLQGVKVP  
MHKLFLEMLEAKAWARADSLQEWPRLEQVPSPLHRATKRQHVHFLTPLPPPPSVAWVGTAQAGYHLEVFL  
PQRAGWPRAA

TRTRPLEQKLISEEDLAANDILDYKDDDDKV

Tag:	C-Myc/DDK
Purity:	> 80% as determined by SDS-PAGE and Coomassie blue staining
Concentration:	>0.05 µg/µL as determined by microplate BCA method
Labeling Method:	Labeled with [U- <sup>13</sup> C <sub>6</sub> , <sup>15</sup> N <sub>4</sub> ]-L-Arginine and [U- <sup>13</sup> C <sub>6</sub> , <sup>15</sup> N <sub>2</sub> ]-L-Lysine
Buffer:	25 mM Tris-HCl, 100 mM glycine, pH 7.3
Storage:	Store at -80°C. Avoid repeated freeze-thaw cycles.
Stability:	Stable for 3 months from receipt of products under proper storage and handling conditions.
RefSeq:	<u><a href="#">NP_004443</a></u>
RefSeq Size:	2193
RefSeq ORF:	1500



[View online »](#)

**Synonyms:** DFNB35; ERR2; ERRb; ERR beta-2; ERRbeta2; ESRL2; NR3B2

**Locus ID:** 2103

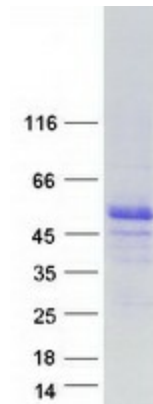
**UniProt ID:** [O95718](#)

**Cytogenetics:** 14q24.3

**Summary:** This gene encodes a protein with similarity to the estrogen receptor. Its function is unknown; however, a similar protein in mouse plays an essential role in placental development. [provided by RefSeq, Jul 2008]

**Protein Families:** Druggable Genome, Nuclear Hormone Receptor, Transcription Factors

### Product images:



Coomassie blue staining of purified ESRRB protein (Cat# [TP315995]). The protein was produced from HEK293T cells transfected with ESRRB cDNA clone (Cat# [RC215995]) using MegaTran 2.0 (Cat# [TT210002]).