

Product datasheet for PH315994

SEC14 like protein 2 (SEC14L2) (NM_012429) Human Mass Spec Standard

Product data:

Product Type:	Mass Spec Standards
Description:	SEC14L2 MS Standard C13 and N15-labeled recombinant protein (NP_036561)
Species:	Human
Expression Host:	HEK293
Expression cDNA Clone or AA Sequence:	RC215994
Predicted MW:	46 kDa
Protein Sequence:	>RC215994 representing NM_012429 Red=Cloning site Green=Tags(s)

MSGRVGDLSRQKEALAKFRENVDVLPALPNPDDYFLLRWLRARSFDLQKSEAMLRKHVEFRKQKQDIDN
IISWQPPEVIQQYLSGGMCGYDLGCPVWYDIIGPLDAKGLLFSASKQDLLRTKMRECELLLQECAHQTT
KLGRKVVETITIIYDCEGLGLKHLWKPAVEAYGEFLCMFEENYPETLKRFLFVVKAPKLPVAYNLIKPFLS
EDTRKKIMVLGANWKEVLLKHISPDQVPVEYGGTMDPDGPNPKCKSKINYGGDIPRKYVYRDQVKKQYEH
SVQISRGSSHQVEYEILFPGCVLRWQFMSDGADVGFIFLKTGMGERQRAGEMTEVLPNQRYNSHLVPED
GTLTCSDPGIYVLRFDNTYSFIHAKKVNFVTEVLLPDKASEEKMQLGAGTPK

TRTRPLEQKLISEEDLAANDILDYKDDDDKV

Tag:	C-Myc/DDK
Purity:	> 80% as determined by SDS-PAGE and Coomassie blue staining
Concentration:	>0.05 µg/µL as determined by microplate BCA method
Labeling Method:	Labeled with [U- ¹³ C ₆ , ¹⁵ N ₄]-L-Arginine and [U- ¹³ C ₆ , ¹⁵ N ₂]-L-Lysine
Buffer:	25 mM Tris-HCl, 100 mM glycine, pH 7.3
Storage:	Store at -80°C. Avoid repeated freeze-thaw cycles.
Stability:	Stable for 3 months from receipt of products under proper storage and handling conditions.
RefSeq:	NP_036561
RefSeq Size:	2818
RefSeq ORF:	1209
Synonyms:	C22orf6; SPF; TAP; TAP1
Locus ID:	23541



[View online »](#)

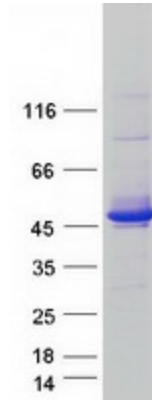
UniProt ID: [O76054](#), [A0A024R1I5](#)

Cytogenetics: 22q12.2

Summary: This gene encodes a cytosolic protein which belongs to a family of lipid-binding proteins including Sec14p, alpha-tocopherol transfer protein, and cellular retinol-binding protein. The encoded protein stimulates squalene monooxygenase which is a downstream enzyme in the cholesterol biosynthetic pathway. Alternatively spliced transcript variants encoding different isoforms have been identified for this gene. [provided by RefSeq, Oct 2008]

Protein Families: Transcription Factors

Product images:



Coomassie blue staining of purified SEC14L2 protein (Cat# [TP315994]). The protein was produced from HEK293T cells transfected with SEC14L2 cDNA clone (Cat# [RC215994]) using MegaTran 2.0 (Cat# [TT210002]).