

Product datasheet for PH315992

MSI1 (NM_002442) Human Mass Spec Standard

Product data:

Product Type:	Mass Spec Standards
Description:	MSI1 MS Standard C13 and N15-labeled recombinant protein (NP_002433)
Species:	Human
Expression Host:	HEK293
Expression cDNA Clone or AA Sequence:	RC215992
Predicted MW:	38.9 kDa
Protein Sequence:	>RC215992 representing NM_002442 Red=Cloning site Green=Tags(s)
	METDAPQPGLASPDSPHDPCKMFIGGLSWQTTQEGLREYFGQFGEVKECLVMDPLTKRSRGFGFVTFMD QAGVDKVLQSRHELDSKTIDPKVAFPRRAQPKMVRTKKIFVGGLSVNTTVEDVKQYFEQFGKVDAML MFDKTTNRHRGFGFVTFESEDIVEKVCEIHFHEINNKMVECKKAQPKEVMSPTGSARGRSRVMPYGMDF MLGIGMLGYPGFQATTYASRSYTGAPGYTYQFPEFRVERTPLPSAPVLPeltaIPLTAYGPMAAAAAAAA AVVRGTGSHPWMTAPPPGSTPSRTGGFLGTTSPGPMAELYGAANQDSGVSSYISAASPAPSTGFGHSLGG PLIATAFTNGYH
	TRTRPLEQKLISEEDLAANDILDYKDDDDKV
Tag:	C-Myc/DDK
Purity:	> 80% as determined by SDS-PAGE and Coomassie blue staining
Concentration:	>0.05 µg/µL as determined by microplate BCA method
Labeling Method:	Labeled with [U- ¹³ C ₆ , ¹⁵ N ₄]-L-Arginine and [U- ¹³ C ₆ , ¹⁵ N ₂]-L-Lysine
Buffer:	25 mM Tris-HCl, 100 mM glycine, pH 7.3
Storage:	Store at -80°C. Avoid repeated freeze-thaw cycles.
Stability:	Stable for 3 months from receipt of products under proper storage and handling conditions.
RefSeq:	NP_002433
RefSeq Size:	2950
RefSeq ORF:	1086
Locus ID:	4440
UniProt ID:	O43347

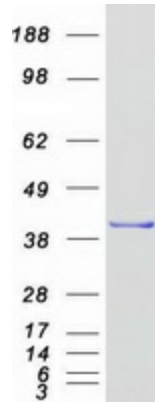


[View online »](#)

Cytogenetics: 12q24.31

Summary: This gene encodes a protein containing two conserved tandem RNA recognition motifs. Similar proteins in other species function as RNA-binding proteins and play central roles in posttranscriptional gene regulation. Expression of this gene has been correlated with the grade of the malignancy and proliferative activity in gliomas and melanomas. A pseudogene for this gene is located on chromosome 11q13. [provided by RefSeq, Jul 2008]

Product images:



Coomassie blue staining of purified MSI1 protein (Cat# [TP315992]). The protein was produced from HEK293T cells transfected with MSI1 cDNA clone (Cat# [RC215992]) using MegaTran 2.0 (Cat# [TT210002]).