

Product datasheet for PH315959

SPACA3 (NM_173847) Human Mass Spec Standard

Product data:

Product Type:	Mass Spec Standards
Description:	SPACA3 MS Standard C13 and N15-labeled recombinant protein (NP_776246)
Species:	Human
Expression Host:	HEK293
Expression cDNA Clone or AA Sequence:	RC215959
Predicted MW:	23.4 kDa
Protein Sequence:	>RC215959 protein sequence Red=Cloning site Green=Tags(s) MVSALRGAPLIRVHSSPVSSPSVSGPRRLVVSCLSSQSSALSQSGGGSTSAAGIEARSRALRRRWCPAGIM LLALVCLLSCLLPSEAKLYGRCELARVLHDFGLDGYRGYSLADWVCLAYFTSGFNAAALDYEADGSTNN GIFQINSRRWCSNLTNPVNPVCRMYCSDLLNPNLKDTVICAMKIQEPQGLGYWEAWRHHCQGDLEWV DGCDF TRTRPLEQKLI SEEDLAANDILDYKDDDDKV
Tag:	C-Myc/DDK
Purity:	> 80% as determined by SDS-PAGE and Coomassie blue staining
Concentration:	>0.05 µg/µL as determined by microplate BCA method
Labeling Method:	Labeled with [U- 13C6, 15N4]-L-Arginine and [U- 13C6, 15N2]-L-Lysine
Buffer:	25 mM Tris-HCl, 100 mM glycine, pH 7.3
Storage:	Store at -80°C. Avoid repeated freeze-thaw cycles.
Stability:	Stable for 3 months from receipt of products under proper storage and handling conditions.
RefSeq:	NP_776246
RefSeq Size:	819
RefSeq ORF:	645
Synonyms:	ALLP17; CT54; LYC3; LYZC; LYZL3; SLLP1
Locus ID:	124912
UniProt ID:	Q8IXA5 , A0A080YUZ7

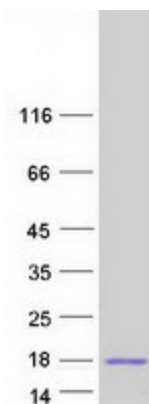


[View online »](#)

Cytogenetics: 17q11.2

Summary: The protein encoded by this gene is a sperm surface protein that may be involved in adhesion to the egg prior to fertilization. While the encoded protein has significant similarity to lysozyme at the amino acid level, it has no detectable bacteriocidal activity. Several transcript variants encoding different isoforms have been found for this gene. [provided by RefSeq, Nov 2015]

Product images:



Coomassie blue staining of purified SPACA3 protein (Cat# [TP315959]). The protein was produced from HEK293T cells transfected with SPACA3 cDNA clone (Cat# [RC215959]) using MegaTran 2.0 (Cat# [TT210002]).