

## Product datasheet for PH315940

### 14-3-3 beta (YWHAB) (NM\_003404) Human Mass Spec Standard

#### Product data:

Product Type:	Mass Spec Standards
Description:	YWHAB MS Standard C13 and N15-labeled recombinant protein (NP_003395)
Species:	Human
Expression Host:	HEK293
Expression cDNA Clone or AA Sequence:	RC215940
Predicted MW:	28.1 kDa
Protein Sequence:	>RC215940 protein sequence Red=Cloning site Green=Tags(s)  MTMDKSELVQKAKLAEQAERYDDMAAMKAVTEQGHLSNEERNLLSVAYKNVVGARRSSWRVISSIEQK TERNEKKQMGKEYREKIEAELQDQCNDVLELLDKYLIPNATQPESKVFYLMKMGDYFRYLSEVASGDNK QTTVSNSQQAYQEAFEISKEMQPTHPIRLGLALNFSVFYYEILNSPEKACSLAKTAFDEAIAELDTLNE ESYKDSTLIMQLLRDNLTLWTSENQGDGEGEEN  TRTRPLEQKLI SEEDLAANDILDYKDDDDKV
Tag:	C-Myc/DDK
Purity:	> 80% as determined by SDS-PAGE and Coomassie blue staining
Concentration:	>0.05 µg/µL as determined by microplate BCA method
Labeling Method:	Labeled with [U- <sup>13</sup> C <sub>6</sub> , <sup>15</sup> N <sub>4</sub> ]-L-Arginine and [U- <sup>13</sup> C <sub>6</sub> , <sup>15</sup> N <sub>2</sub> ]-L-Lysine
Buffer:	25 mM Tris-HCl, 100 mM glycine, pH 7.3
Storage:	Store at -80°C. Avoid repeated freeze-thaw cycles.
Stability:	Stable for 3 months from receipt of products under proper storage and handling conditions.
RefSeq:	<a href="#">NP_003395</a>
RefSeq Size:	3231
RefSeq ORF:	738
Synonyms:	GW128; HEL-S-1; HS1; KCIP-1; YWHAA
Locus ID:	7529
UniProt ID:	<a href="#">P31946</a> , <a href="#">V9HWD6</a>



[View online »](#)

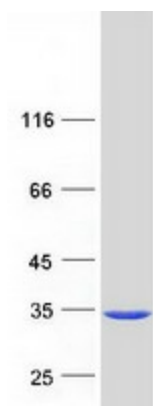
**Cytogenetics:** 20q13.12

**Summary:** This gene encodes a protein belonging to the 14-3-3 family of proteins, members of which mediate signal transduction by binding to phosphoserine-containing proteins. This highly conserved protein family is found in both plants and mammals. The encoded protein has been shown to interact with RAF1 and CDC25 phosphatases, suggesting that it may play a role in linking mitogenic signaling and the cell cycle machinery. Two transcript variants, which encode the same protein, have been identified for this gene. [provided by RefSeq, Jul 2008]

**Protein Families:** Druggable Genome

**Protein Pathways:** Cell cycle, Neurotrophin signaling pathway, Oocyte meiosis

### Product images:



Coomassie blue staining of purified YWHAB protein (Cat# [TP315940]). The protein was produced from HEK293T cells transfected with YWHAB cDNA clone (Cat# [RC215940]) using MegaTran 2.0 (Cat# [TT210002]).