

Product datasheet for PH315870

LIPC (NM_000236) Human Mass Spec Standard

Product data:

Product Type:	Mass Spec Standards
Description:	LIPC MS Standard C13 and N15-labeled recombinant protein (NP_000227)
Species:	Human
Expression Host:	HEK293
Expression cDNA Clone or AA Sequence:	RC215870
Predicted MW:	55.85 kDa
Protein Sequence:	>RC215870 representing NM_000236 Red=Cloning site Green=Tags(s)
	<p>MDTSPLCFSILLVLCIFIQSSALGQSLKPEPFGRRAQAVETNKTLEHMKTRFLLFGETNQGCQIRINHPD TLQECGFNSSPLVMIHGWSDVGVLENWIWQMVAAALKSQPAQPVNGLVDWITLAHDHYTIAVRNTRLV GKEVAALLRWLEESVQLSRSHVHLIGYSLGAHVSGFAGSSIGGTHKIGRITGLDAAGPLFEGSAPSNRLS PDDASFVDAIHTFTREHMLSVGIKQPIGHYDFYPNGGSFQPGCHFLELYRHIAQHGFNAITQTIKCSHE RSVHLFIDSLHAGTQSMAYPCGDMNSFSQGLCLSCCKGRCNTLGYHVRQEPRSKSKRFLVTRAQSPFK VYHYQLKIQFINQTETPIQTTFTMSLLGTKEKMQKIPITLKGKIASNKTYSFLLITLDVDIGELIMIKFKW ENSAVWANVWDTVQTIIPWSTGPRHSGLVLKTIRVKAGETQQRMTFCSENTDLLLLRPTQEKIFVKCEIK SKTSKRKIR</p> <p>TRTRPLEQKLISEEDLAANDILDYKDDDDKV</p>
Tag:	C-Myc/DDK
Purity:	> 80% as determined by SDS-PAGE and Coomassie blue staining
Concentration:	>0.05 µg/µL as determined by microplate BCA method
Labeling Method:	Labeled with [U- 13C6, 15N4]-L-Arginine and [U- 13C6, 15N2]-L-Lysine
Buffer:	25 mM Tris-HCl, 100 mM glycine, pH 7.3
Storage:	Store at -80°C. Avoid repeated freeze-thaw cycles.
Stability:	Stable for 3 months from receipt of products under proper storage and handling conditions.
RefSeq:	<u>NP_000227</u>
RefSeq Size:	1603
RefSeq ORF:	1497



[View online »](#)

Synonyms: HDLCQ12; HL; HTGL; LIPH

Locus ID: 3990

UniProt ID: [P11150](#), [A6H8L5](#)

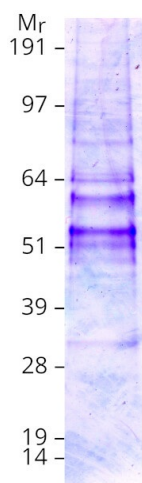
Cytogenetics: 15q21.3

Summary: LIPC encodes hepatic triglyceride lipase, which is expressed in liver. LIPC has the dual functions of triglyceride hydrolase and ligand/bridging factor for receptor-mediated lipoprotein uptake. [provided by RefSeq, Jul 2008]

Protein Families: Druggable Genome, Secreted Protein

Protein Pathways: Glycerolipid metabolism, Metabolic pathways

Product images:



Coomassie blue staining of purified LIPC protein (Cat# [TP315870]). The protein was produced from HEK293T cells transfected with LIPC cDNA clone (Cat# [RC215870]) using MegaTran 2.0 (Cat# [TT210002]).