

## Product datasheet for PH315868

### FGF12 (NM\_021032) Human Mass Spec Standard

#### Product data:

Product Type:	Mass Spec Standards
Description:	FGF12 MS Standard C13 and N15-labeled recombinant protein (NP_066360)
Species:	Human
Expression Host:	HEK293
Expression cDNA Clone or AA Sequence:	RC215868
Predicted MW:	27.2 kDa
Protein Sequence:	>RC215868 representing NM_021032 Red=Cloning site Green=Tags(s)  MAAAIASSLIRQKRQARESNSDRVSASKRRSSPSKDGSRSLCERHVLGVFSKVRFCSGRKRPRVRRRPEPQL KGIIVTRLFSQQGYFLQMHPDGTIDGTDKENDSYTLFNLIPVGLRVVAIQGVKASLYVAMNGEGYLYSSDV FTPECKFKESVFNYYVYSSSTLYRQQESGRAWFLGLNKEGQIMKGNRVKTKPSSHFPVKPIEVCMYRE PSLHEIGEKGGRSRKSSGTPTMNGGKVVNQDST  TRTRPLEQKLI SEEDLAANDILDYKDDDDKV
Tag:	C-Myc/DDK
Purity:	> 80% as determined by SDS-PAGE and Coomassie blue staining
Concentration:	>0.05 µg/µL as determined by microplate BCA method
Labeling Method:	Labeled with [U- <sup>13</sup> C <sub>6</sub> , <sup>15</sup> N <sub>4</sub> ]-L-Arginine and [U- <sup>13</sup> C <sub>6</sub> , <sup>15</sup> N <sub>2</sub> ]-L-Lysine
Buffer:	25 mM Tris-HCl, 100 mM glycine, pH 7.3
Storage:	Store at -80°C. Avoid repeated freeze-thaw cycles.
Stability:	Stable for 3 months from receipt of products under proper storage and handling conditions.
RefSeq:	<a href="#">NP_066360</a>
RefSeq Size:	2817
RefSeq ORF:	729
Synonyms:	DEE47; EIEE47; FGF12B; FHF1
Locus ID:	2257
UniProt ID:	<a href="#">P61328</a>



[View online »](#)

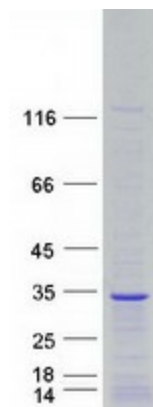
**Cytogenetics:** 3q28-q29

**Summary:** The protein encoded by this gene is a member of the fibroblast growth factor (FGF) family. FGF family members possess broad mitogenic and cell survival activities, and are involved in a variety of biological processes, including embryonic development, cell growth, morphogenesis, tissue repair, tumor growth, and invasion. This growth factor lacks the N-terminal signal sequence present in most of the FGF family members, but it contains clusters of basic residues that have been demonstrated to act as a nuclear localization signal. When transfected into mammalian cells, this protein accumulated in the nucleus, but was not secreted. The specific function of this gene has not yet been determined. [provided by RefSeq, Dec 2019]

**Protein Families:** Secreted Protein

**Protein Pathways:** MAPK signaling pathway, Melanoma, Pathways in cancer, Regulation of actin cytoskeleton

### Product images:



Coomassie blue staining of purified FGF12 protein (Cat# [TP315868]). The protein was produced from HEK293T cells transfected with FGF12 cDNA clone (Cat# [RC215868]) using MegaTran 2.0 (Cat# [TT210002]).