

Product datasheet for PH315860

Placental lactogen (CSH1) (NM_001317) Human Mass Spec Standard

Product data:

Product Type:	Mass Spec Standards
Description:	CSH1 MS Standard C13 and N15-labeled recombinant protein (NP_001308)
Species:	Human
Expression Host:	HEK293
Expression cDNA Clone or AA Sequence:	RC215860
Predicted MW:	25 kDa
Protein Sequence:	>RC215860 protein sequence Red=Cloning site Green=Tags(s) MAPGSRTSLLLAFALLCLPWLQEAGAVQTVPLSRLFDHAMLQAHRAHQLAIDTYQEFEEYIPKDQKYSF LHDSQTSFCFSDSIPTPSNMEETQQKSNLELLRISLLLIESWLEPVRFLRSMFANNLVYDTSDDYHLL KDLEEGIQLMGRLEDGSRRTGQILKQTYSKFDTNSHNHDALLKNYGLLYCFRKDMDKVETFLRMVQCRS VEGSCGF TRTRPLEQKLISEEDLAANDILDYKDDDDKV
Tag:	C-Myc/DDK
Purity:	> 80% as determined by SDS-PAGE and Coomassie blue staining
Concentration:	>0.05 µg/µL as determined by microplate BCA method
Labeling Method:	Labeled with [U- ¹³ C ₆ , ¹⁵ N ₄]-L-Arginine and [U- ¹³ C ₆ , ¹⁵ N ₂]-L-Lysine
Buffer:	25 mM Tris-HCl, 100 mM glycine, pH 7.3
Storage:	Store at -80°C. Avoid repeated freeze-thaw cycles.
Stability:	Stable for 3 months from receipt of products under proper storage and handling conditions.
RefSeq:	NP_001308
RefSeq Size:	934
RefSeq ORF:	651
Synonyms:	CS-1; CSA; CSMT; GHB3; hCS-1; hCS-A; PL
Locus ID:	1442
UniProt ID:	P01243 , P0DML2 , P0DML3 , A8K6C2



[View online »](#)

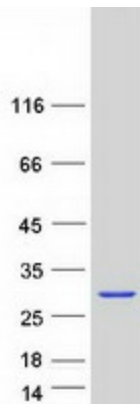
Cytogenetics: 17q23.3

Summary: The protein encoded by this gene is a member of the somatotropin/prolactin family of hormones and plays an important role in growth control. The gene is located at the growth hormone locus on chromosome 17 along with four other related genes in the same transcriptional orientation; an arrangement which is thought to have evolved by a series of gene duplications. Although the five genes share a remarkably high degree of sequence identity, they are expressed selectively in different tissues. Alternative splicing generates additional isoforms of each of the five growth hormones, leading to further diversity and potential for specialization. This particular family member is expressed mainly in the placenta and utilizes multiple transcription initiation sites. Expression of the identical mature proteins for chorionic somatomammotropin hormones 1 and 2 is upregulated during development, although the ratio of 1 to 2 increases by term. Mutations in this gene result in placental lactogen deficiency and Silver-Russell syndrome. [provided by RefSeq, Jul 2008]

Protein Families: Druggable Genome

Protein Pathways: Jak-STAT signaling pathway, Neuroactive ligand-receptor interaction

Product images:



Coomassie blue staining of purified CSH1 protein (Cat# [TP315860]). The protein was produced from HEK293T cells transfected with CSH1 cDNA clone (Cat# [RC215860]) using MegaTran 2.0 (Cat# [TT210002]).