

## Product datasheet for PH315857

### GM CSF Receptor alpha (CSF2RA) (NM\_006140) Human Mass Spec Standard

#### Product data:

Product Type:	Mass Spec Standards
Description:	CSF2RA MS Standard C13 and N15-labeled recombinant protein (NP_006131)
Species:	Human
Expression Host:	HEK293
Expression cDNA Clone or AA Sequence:	RC215857
Predicted MW:	46.2 kDa
Protein Sequence:	>RC215857 protein sequence Red=Cloning site Green=Tags(s)
	<p>MLLLVTSLLLCELPHPAFLLIPEKSDLRTVAPASSLNVRFDSTMNLSWDCQENTTFSKCFLTDKKNRVV EPRLSNNECSCTFREICLHEGVTFEVHVNTSQRGFQKLLYPNSGREGTAAQNFSCFIYNADLMNCTWAR GPTAPRDVQYFLYIRNSKRREIRCPYYIQDSGTHVGCHLDNLSGLTSRNYFLVNGTSREIGIQFFDSLL DTKKIERFNPPSNVTVRCNTTHCLVRWKQPRTYQKLSYLDFQYQLDVHRKNTQPGTENLLINVSQDLENR YNFPSSEPRAKHSVKIRAADVRLNWSWSEAIIEFGSDDGNLGSVYIYVLLIVGTLVCGIVLGFLFKRFL RIQRLFPVPQIKDKLNDNHEVEDEIIWEEFTPEEGKGYREEVLTVKEIT</p> <p>TRTRPLEQKLISEEDLAANDILDYKDDDDKV</p>
Tag:	C-Myc/DDK
Purity:	> 80% as determined by SDS-PAGE and Coomassie blue staining
Concentration:	>0.05 µg/µL as determined by microplate BCA method
Labeling Method:	Labeled with [U- <sup>13</sup> C <sub>6</sub> , <sup>15</sup> N <sub>4</sub> ]-L-Arginine and [U- <sup>13</sup> C <sub>6</sub> , <sup>15</sup> N <sub>2</sub> ]-L-Lysine
Buffer:	25 mM Tris-HCl, 100 mM glycine, pH 7.3
Storage:	Store at -80°C. Avoid repeated freeze-thaw cycles.
Stability:	Stable for 3 months from receipt of products under proper storage and handling conditions.
RefSeq:	<u><a href="#">NP_006131</a></u>
RefSeq Size:	1855
RefSeq ORF:	1200
Synonyms:	alphaGMR; CD116; CDw116; CSF2R; CSF2RAX; CSF2RAY; CSF2RX; CSF2RY; GM-CSF-R-alpha; GMCSFR; GMCSFR-alpha; GMR; GMR-alpha; SMDP4



[View online »](#)

Locus ID: 1438

UniProt ID: [P15509](#)

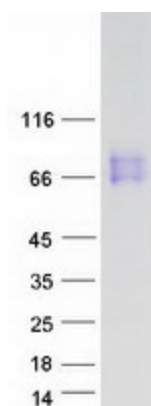
Cytogenetics: X;Y

**Summary:** The protein encoded by this gene is the alpha subunit of the heterodimeric receptor for colony stimulating factor 2, a cytokine which controls the production, differentiation, and function of granulocytes and macrophages. The encoded protein is a member of the cytokine family of receptors. This gene is found in the pseudoautosomal region (PAR) of the X and Y chromosomes. Multiple transcript variants encoding different isoforms have been found for this gene, with some of the isoforms being membrane-bound and others being soluble. [provided by RefSeq, Jul 2008]

**Protein Families:** Druggable Genome, Secreted Protein, Transmembrane

**Protein Pathways:** Cytokine-cytokine receptor interaction, Hematopoietic cell lineage, Jak-STAT signaling pathway, Pathways in cancer

### Product images:



Coomassie blue staining of purified CSF2RA protein (Cat# [TP315857]). The protein was produced from HEK293T cells transfected with CSF2RA cDNA clone (Cat# [RC215857]) using MegaTran 2.0 (Cat# [TT210002]).