

Product datasheet for PH315853

FKBP15 (NM_015258) Human Mass Spec Standard

Product data:

Product Type:	Mass Spec Standards
Description:	FKBP15 MS Standard C13 and N15-labeled recombinant protein (NP_056073)
Species:	Human
Expression Host:	HEK293
Expression cDNA Clone or AA Sequence:	RC215853
Predicted MW:	133.4 kDa
Protein Sequence:	>RC215853 representing NM_015258 Red=Cloning site Green=Tags(s)

MFGAGDEDDDFLSPSGGARLASLFGLDQAAAGHGNEFFQYTAPKQPKKGQGTAAATGNQATPKTAPATMS
TPTILVATAVHAYRYTNGQYVKQKFGAAVLGNHTAREYRILLYISQQQPVTVARIHVNFELMVRPNYS
TFYDDQRQNSIMFESEKAAVEFNKQVCIACNSTSSLDVLSQDLIVADGPAVEVGDSEVAYTGWLFQ
NHVLGQVDFSTANKDKLLRLKLGSGKVIKGWEDGMLGMKKGKRLLI VPPACAVGSEGVIWGTQATDSIL
VFEVEVRRVKFARDSGSDGHSVSRDSAAPSPIPGADNL SADPVVSPPTSIPFKSGEPALRTKSNLSEQ
LAINTSPDAVKAKLISRMAKMGQPMLPILPPQLDSNDSEIEDVNTLQGGGQPVVTPSVQPSLHPAHPALP
QMTSQAPQPSVTGLQAPSAALMQVSSLDSHSAVSGNAQSFQPYAGMQAYAYPQASAVTSQLQPVRPLYPA
PLSQPPHFQSGDMASFLMTEARQHNTIIRMAVSKVADKMDHLMTKVEELQKHSAGNSMLIPSMSVTMET
SMIMSNIQRIIQENERLQEIIEKSNRIEEQNDKISELIERNQRYVEQSNLMMEKRNNSLQTATENTQAR
VLHAEQEAKAVTEELAAATAQVSHLQLKMTAHQKKE TELQMQL TESLKETDLLRGQLTKVQAKLSELQET
SEQAQSKFKSEKQNRKQLELKVTSLEEEEL TDLRVEKESLEKNLSERKKKSAQERSQAEEDIDEIRKSYQE
ELDKLRQLLKKTRVSTDQAAAEQLSLVQAE LQTQWEAKCEHLLASAKDEHLQQYQEVCAQRDAYQQKLVQ
LQEKCLALQAQITALTKQNEQHIELEKNKSQMSGVEAAAADPSEKVKKIMNQVFQSLRREFELEESYNG
RTILGTIMNTIKMVTQLLLNQEQEKEEESSEEEEEKAEERPRRSQEQSASASSGQPQAPLNRERPESP
MVPSEQVVEEAVPLPPQALTTSDGHRRKGDSEAEALSEIKDGSLLPELSCIPSHRVLGPPTSIPPEPLG
PVSMDSCEEEELAASPMAAKPDNPSGKVCVREVAPDGPLQESSTRLSLTSDP EEGDPLALGPE SPGEPQP
PQLKKDDVTSSTGPHKELSTEAGSTVAGAALRPSHHSQRSLSGDEEDELFKGATLKALRPKAQPEEED
EDEVSMKGRPPPTPLFGDDDDDDIDWLG

TRTRPLEQKLISEEDLAANDILDYKDDDDKV

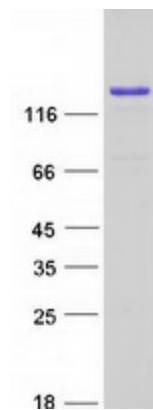
Tag:	C-Myc/DDK
Purity:	> 80% as determined by SDS-PAGE and Coomassie blue staining
Concentration:	>0.05 µg/µL as determined by microplate BCA method
Labeling Method:	Labeled with [U- ¹³ C ₆ , ¹⁵ N ₄]-L-Arginine and [U- ¹³ C ₆ , ¹⁵ N ₂]-L-Lysine



[View online »](#)

Buffer:	25 mM Tris-HCl, 100 mM glycine, pH 7.3
Storage:	Store at -80°C. Avoid repeated freeze-thaw cycles.
Stability:	Stable for 3 months from receipt of products under proper storage and handling conditions.
RefSeq:	NP_056073
RefSeq Size:	4336
RefSeq ORF:	3657
Synonyms:	FKBP133; KIAA0674; PPP1R76
Locus ID:	23307
UniProt ID:	Q5T1M5
Cytogenetics:	9q32
Summary:	May be involved in the cytoskeletal organization of neuronal growth cones. Seems to be inactive as a PPlase (By similarity). Involved in the transport of early endosomes at the level of transition between microfilament-based and microtubule-based movement. [UniProtKB/Swiss-Prot Function]
Protein Families:	Druggable Genome

Product images:



Coomassie blue staining of purified FKBP15 protein (Cat# [TP315853]). The protein was produced from HEK293T cells transfected with FKBP15 cDNA clone (Cat# [RC215853]) using MegaTran 2.0 (Cat# [TT210002]).