

## Product datasheet for PH315791

### AP2B1 (NM\_001282) Human Mass Spec Standard

#### Product data:

Product Type:	Mass Spec Standards
Description:	AP2B1 MS Standard C13 and N15-labeled recombinant protein (NP_001273)
Species:	Human
Expression Host:	HEK293
Expression cDNA Clone or AA Sequence:	RC215791
Predicted MW:	104.4 kDa
Protein Sequence:	>RC215791 representing NM_001282 Red=Cloning site Green=Tags(s)

MTDSKYFTTNKKGEIFELKAELNNEKKEKRKEAVKKVIAAMTVGKDVSSLPDQVNCMQTDNLELKKLVY  
LYLMNYAKSQPDMAIMAVNSFVKDCEDPNPLIRALAVRTMGCIRVDKITEYLCEPLRKCLKDEDPYVRKT  
AAVCVAKLHDINAQMVEDQGFLLDSLRLDIADSNPMVVANAVAALSEISESHPNLNLLDLNPQNKLLTA  
LNECTEWGQIFILDCLSNYNPKDDREAQSI CERVTPRLSHANSVAVLSAVKVLKMFLELLPKDSDYYNML  
LKKLAPPLVTL SGEPEVQYVALRNINLIVQKRPEILKQEI KVFVYKYNPIYVKLEKLDIMIRLASQAN  
IAQVLAELKEYATEVDVDFVRKAVRAIGRAIKVEQSAERCVSTLLDLIQTKVNYVVQEAIVVIRDIFRK  
YPNKYESI IATL CENLDSLDEPDARAAMIWIVGEYAERIDNADELLESFLEGFHDESTQVQLTLLTAIVK  
LFLKKPSETQELVQQVLSLATQSDNPDLRDRGYIWRLLSTDPVTAKEVVLSEKPLISEETDLIEPTLL  
DELI CHIGSLASVYHKPPNAFVEGSHGHRKHLPIHHGSTDAGDSPVGT TATNLEQPQVIPSQGDLLGD  
LLNLDLGPPVNPQVSSMQMGAVDLLGGGLDSL VGQSFIPSSVPATFAPSPTPAVVSSGLNDFELSTGI  
GMAPGGYVAPKAVWLPVAVKAKGLEISGTFTHRQGHYMEMNFTNKALQHMTDFAIQFNKNSFGVIPSTPL  
AIHTPLMPNQSIDVSLPLNTLGPVMKMEPLNQLQAVKNNIDVFYF SCLIPLNVL FVEDGKMERQVFLAT  
WKDIPNENELQFQIKECHLNADTVSSKLQNNVYTI AKRNVEGQDMLYQSLKLTNGIWILAE LRIQPGNP  
NYTLSLKCRAPEVSQYIYQVYDSILKN

TRTRPLEQKLI SEEDLAANDILDYKDDDDKV

Tag:	C-Myc/DDK
Purity:	> 80% as determined by SDS-PAGE and Coomassie blue staining
Concentration:	>0.05 µg/µL as determined by microplate BCA method
Labeling Method:	Labeled with [U- <sup>13</sup> C <sub>6</sub> , <sup>15</sup> N <sub>4</sub> ]-L-Arginine and [U- <sup>13</sup> C <sub>6</sub> , <sup>15</sup> N <sub>2</sub> ]-L-Lysine
Buffer:	25 mM Tris-HCl, 100 mM glycine, pH 7.3
Storage:	Store at -80°C. Avoid repeated freeze-thaw cycles.
Stability:	Stable for 3 months from receipt of products under proper storage and handling conditions.



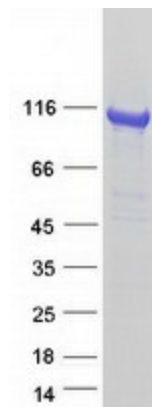
[View online »](#)

RefSeq:	<a href="#">NP_001273</a>
RefSeq Size:	5730
RefSeq ORF:	2811
Synonyms:	ADTB2; AP2-BETA; AP105B; CLAPB1
Locus ID:	163
UniProt ID:	<a href="#">P63010</a>
Cytogenetics:	17q12

**Summary:** The protein encoded by this gene is one of two large chain components of the assembly protein complex 2, which serves to link clathrin to receptors in coated vesicles. The encoded protein is found on the cytoplasmic face of coated vesicles in the plasma membrane. Two transcript variants encoding different isoforms have been found for this gene. [provided by RefSeq, Jul 2008]

**Protein Families:** Druggable Genome  
**Protein Pathways:** Endocytosis, Huntington's disease

### Product images:



Coomassie blue staining of purified AP2B1 protein (Cat# [TP315791]). The protein was produced from HEK293T cells transfected with AP2B1 cDNA clone (Cat# [RC215791]) using MegaTran 2.0 (Cat# [TT210002]).