

Product datasheet for PH315740

Endonuclease V (ENDOV) (NM_173627) Human Mass Spec Standard

Product data:

Product Type:	Mass Spec Standards
Description:	FLJ35220 MS Standard C13 and N15-labeled recombinant protein (NP_775898)
Species:	Human
Expression Host:	HEK293
Expression cDNA Clone or AA Sequence:	RC215740
Predicted MW:	30.6 kDa
Protein Sequence:	>RC215740 representing NM_173627 Red=Cloning site Green=Tags(s)

MALEAAGPPEETLSLWKREQARLKAHVVDRTTEAWQRDPAFSGLQRVGGVDVSFVKGDSVRACASLVVL
SFPELEVYEEESRMVSLTAPYVSGFLAFREVPFLLQLVQQLREKEPGLMPQVLLVDGNGVLHHRGFGVAC
HLGVLTDLPCVGVAKLLQVDGLENNALHKEKIRLLQTRGDSFPLLGDSTVLMALRSHDRSTRPLYSIS
VGHRMSLEAAVRLTCCCCRFRIPEPVRQADICSRHIRKSLGLPGPPTPRSPKAQRPVACPKGDSGESSA
LC

TRTRPLEQKLISEEDLAANDILDYKDDDDKV

Tag:	C-Myc/DDK
Purity:	> 80% as determined by SDS-PAGE and Coomassie blue staining
Concentration:	>0.05 µg/µL as determined by microplate BCA method
Labeling Method:	Labeled with [U- ¹³ C ₆ , ¹⁵ N ₄]-L-Arginine and [U- ¹³ C ₆ , ¹⁵ N ₂]-L-Lysine
Buffer:	25 mM Tris-HCl, 100 mM glycine, pH 7.3
Storage:	Store at -80°C. Avoid repeated freeze-thaw cycles.
Stability:	Stable for 3 months from receipt of products under proper storage and handling conditions.
RefSeq:	NP_775898
RefSeq Size:	2858
RefSeq ORF:	846
Locus ID:	284131
UniProt ID:	Q8N8Q3



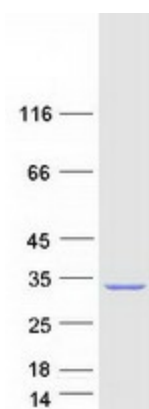
[View online »](#)

Cytogenetics: 17q25.3

Summary: Endoribonuclease that specifically cleaves inosine-containing RNAs: cleaves RNA at the second phosphodiester bond 3' to inosine. Has strong preference for single-stranded RNAs (ssRNAs) toward double-stranded RNAs (dsRNAs). Cleaves mRNAs and tRNAs containing inosine. Also able to cleave structure-specific dsRNA substrates containing the specific sites 5'-IIUI-3' and 5'-UIUU-3'. Inosine is present in a number of RNAs following editing; the function of inosine-specific endoribonuclease is still unclear: it could either play a regulatory role in edited RNAs, or be involved in antiviral response by removing the hyperedited long viral dsRNA genome that has undergone A-to-I editing. Binds branched DNA structures.[UniProtKB/Swiss-Prot Function]

Protein Families: Druggable Genome

Product images:



Coomassie blue staining of purified ENDOV protein (Cat# [TP315740]). The protein was produced from HEK293T cells transfected with ENDOV cDNA clone (Cat# [RC215740]) using MegaTran 2.0 (Cat# [TT210002]).