

Product datasheet for PH315714

Septin 3 (SEPT3) (NM_019106) Human Mass Spec Standard

Product data:

Product Type:	Mass Spec Standards
Description:	SEPT3 MS Standard C13 and N15-labeled recombinant protein (NP_061979)
Species:	Human
Expression Host:	HEK293
Expression cDNA Clone or AA Sequence:	RC215714
Predicted MW:	39.9 kDa
Protein Sequence:	>RC215714 representing NM_019106 Red=Cloning site Green=Tags(s)

MSKGLPETRTDAAMSELVPEPRPKPAVPMKPMNSINLLGYIGIDTIEEQMRKKTMTGDFDNIMVVGQS
GLGKSTLVNTLFKSQVSRKASSWNREEKIPKTVEIKAIGHVIEEGVKMKLTVIDTPGFGDQINNENCWE
PIEKYINEQYKFLKEEVNIARKKRIPDTRVHCLYFISPTGHSLRPLDLEFMKHLKVVNIIPVIAKAD
TMTLEEKSEFKQVRKELEVNGIEFYQKEFDEDEDKTENDKIRQESMPFAVVGSDKEYQVNGKRVLGR
KTPWGIIEVENLNHCEFALLRDFVIRTHLQDLKEVTHNIHYETYRAKRLNDNGGLPPVSDTEESHDSNP

TRTRPLEQKLISEEDLAANDILDYKDDDDKV

Tag:	C-Myc/DDK
Purity:	> 80% as determined by SDS-PAGE and Coomassie blue staining
Concentration:	>0.05 µg/µL as determined by microplate BCA method
Labeling Method:	Labeled with [U- ¹³ C ₆ , ¹⁵ N ₄]-L-Arginine and [U- ¹³ C ₆ , ¹⁵ N ₂]-L-Lysine
Buffer:	25 mM Tris-HCl, 100 mM glycine, pH 7.3
Storage:	Store at -80°C. Avoid repeated freeze-thaw cycles.
Stability:	Stable for 3 months from receipt of products under proper storage and handling conditions.
RefSeq:	NP_061979
RefSeq Size:	4656
RefSeq ORF:	1050
Synonyms:	bK250D10.3; SEP3; SEPT3
Locus ID:	55964



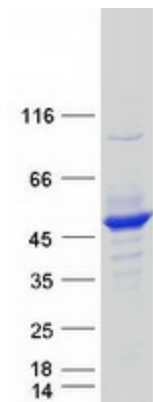
[View online »](#)

UniProt ID: [Q9UH03](#)

Cytogenetics: 22q13.2

Summary: This gene belongs to the septin family of GTPases. Members of this family are required for cytokinesis. Expression is upregulated by retinoic acid in a human teratocarcinoma cell line. The specific function of this gene has not been determined. Alternative splicing of this gene results in several transcript variants encoding different isoforms. [provided by RefSeq, May 2018]

Product images:



Coomassie blue staining of purified SEPTIN3 protein (Cat# [TP315714]). The protein was produced from HEK293T cells transfected with SEPTIN3 cDNA clone (Cat# [RC215714]) using MegaTran 2.0 (Cat# [TT210002]).