

Product datasheet for PH315647

NAT8B (NM_016347) Human Mass Spec Standard

Product data:

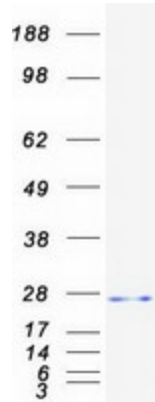
Product Type:	Mass Spec Standards
Description:	NAT8B MS Standard C13 and N15-labeled recombinant protein (NP_057431)
Species:	Human
Expression Host:	HEK293
Expression cDNA Clone or AA Sequence:	RC215647
Predicted MW:	25.4 kDa
Protein Sequence:	<p>>RC215647 representing NM_016347</p> <p>Red=Cloning site Green=Tags(s)</p> <p>MAPYHIRKYQESDRKSVVGLLSGGMAEHAPATFRRLKLPRTLILLGGALALLVSGSWILALVFSLSL LPALWFLAKKPWTRYVDIALRTDMSDITKSYLSECGSCFWVAESEKVVGTVGALPVDDPTLREKRLQLF HLSVDNEHRGQGIKALVRTVLQFARDQGYSEVVDTSNIQLSAMGLYQSLGFKKTGQSFFHVWARLVDL HTVHFIYHLPSAQAGRL</p> <p>TRTRPLEQKLISEEDLAANDILDYKDDDDKV</p>
Tag:	C-Myc/DDK
Purity:	> 80% as determined by SDS-PAGE and Coomassie blue staining
Concentration:	>0.05 µg/µL as determined by microplate BCA method
Labeling Method:	Labeled with [U- ¹³ C ₆ , ¹⁵ N ₄]-L-Arginine and [U- ¹³ C ₆ , ¹⁵ N ₂]-L-Lysine
Buffer:	25 mM Tris-HCl, 100 mM glycine, pH 7.3
Storage:	Store at -80°C. Avoid repeated freeze-thaw cycles.
Stability:	Stable for 3 months from receipt of products under proper storage and handling conditions.
RefSeq:	NP_057431
RefSeq Size:	845
RefSeq ORF:	681
Synonyms:	CML2; Hcml2; NAT8BP
Locus ID:	51471
UniProt ID:	Q9UHF3


[View online »](#)

Cytogenetics: 2p13.1

Summary: The protein encoded by this gene is highly similar to the N-acetyltransferase 8 (NAT8) gene product, which is a kidney and liver protein with homology to bacterial acetyltransferases involved in drug resistance. This gene is localized on chromosome 2 in the vicinity of the NAT8 gene and may represent a pseudogene of NAT8. This gene contains two polymorphic nonsense mutations that disrupt the active site of the protein. The full-length product of this gene contains a complete acetyltransferase domain and is identical in length to NAT8. [provided by RefSeq, Jul 2008]

Product images:



Coomassie blue staining of purified NAT8B protein (Cat# [TP315647]). The protein was produced from HEK293T cells transfected with NAT8B cDNA clone (Cat# [RC215647]) using MegaTran 2.0 (Cat# [TT210002]).