

Product datasheet for PH315636

MACROD2 (NM_001033087) Human Mass Spec Standard

Product data:

Product Type:	Mass Spec Standards
Description:	MACROD2 MS Standard C13 and N15-labeled recombinant protein (NP_001028259)
Species:	Human
Expression Host:	HEK293
Expression cDNA Clone or AA Sequence:	RC215636
Predicted MW:	23.6 kDa
Protein Sequence:	>RC215636 protein sequence Red=Cloning site Green=Tags(s) MNEFFSVDDNNEEEEDVEMKEDSDENGPEEKQSVEEMEEQSQDADGVNTVTVPGPASEEAVEDCKDEDFA KDENITKGGVTDHNSVRDQDHPDQGQENDSTKNEIKIETE SQSSYMETEELSSNQEDAVIVEQPEVIPLTE DQEEKEGEKAPGEDTPRMPGKSEGSSDLENTPGPDVEMNSQVDKVNDPPTESQQEDQLIAGAQDEAKEQRN GTK TRTRPLEQKLI SEEDLAANDILDYKDDDDKV
Tag:	C-Myc/DDK
Purity:	> 80% as determined by SDS-PAGE and Coomassie blue staining
Concentration:	>0.05 µg/µL as determined by microplate BCA method
Labeling Method:	Labeled with [U- ¹³ C ₆ , ¹⁵ N ₄]-L-Arginine and [U- ¹³ C ₆ , ¹⁵ N ₂]-L-Lysine
Buffer:	25 mM Tris-HCl, 100 mM glycine, pH 7.3
Storage:	Store at -80°C. Avoid repeated freeze-thaw cycles.
Stability:	Stable for 3 months from receipt of products under proper storage and handling conditions.
RefSeq:	NP_001028259
RefSeq Size:	4425
RefSeq ORF:	639
Synonyms:	C2orf133; C20orf133
Locus ID:	140733
UniProt ID:	A1Z1Q3

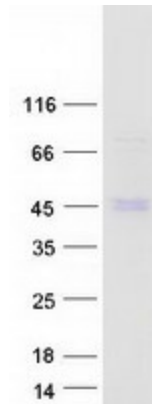


[View online »](#)

Cytogenetics: 20p12.1

Summary: The protein encoded by this gene is a deacetylase involved in removing ADP-ribose from mono-ADP-ribosylated proteins. The encoded protein has been shown to translocate from the nucleus to the cytoplasm upon DNA damage. [provided by RefSeq, May 2017]

Product images:



Coomassie blue staining of purified MACROD2 protein (Cat# [TP315636]). The protein was produced from HEK293T cells transfected with MACROD2 cDNA clone (Cat# [RC215636]) using MegaTran 2.0 (Cat# [TT210002]).