

Product datasheet for PH315628

EDA (NM_001005610) Human Mass Spec Standard

Product data:

Product Type:	Mass Spec Standards
Description:	EDA MS Standard C13 and N15-labeled recombinant protein (NP_001005610)
Species:	Human
Expression Host:	HEK293
Expression cDNA Clone or AA Sequence:	RC215628
Predicted MW:	19 kDa
Protein Sequence:	>RC215628 representing NM_001005610 Red =Cloning site Green =Tags(s) MGYPEVERRELLPAAAPRERGSQGC GCGGAPARAGEGNSCLLFLGFFGLSLALHLLTLCCYLELRSELRR ERGAESRLGGSGTPGTSGLSSLGGLDPDSPITSHLGQPSPKQQPLEPGEAALHSDSQDGHQMALLNFFF PDEKPYSEESRRVRRNKRSKSNEGADGKSTQLILYHF TR TRPLEQKLISEEDLAANDILDYKDDDDKV
Tag:	C-Myc/DDK
Purity:	> 80% as determined by SDS-PAGE and Coomassie blue staining
Concentration:	>0.05 µg/µL as determined by microplate BCA method
Labeling Method:	Labeled with [U- ¹³ C ₆ , ¹⁵ N ₄]-L-Arginine and [U- ¹³ C ₆ , ¹⁵ N ₂]-L-Lysine
Buffer:	25 mM Tris-HCl, 100 mM glycine, pH 7.3
Storage:	Store at -80°C. Avoid repeated freeze-thaw cycles.
Stability:	Stable for 3 months from receipt of products under proper storage and handling conditions.
RefSeq:	<u>NP_001005610</u>
RefSeq Size:	1089
RefSeq ORF:	534
Synonyms:	ECTD1; ED1; ED1-A1; ED1-A2; EDA-A1; EDA-A2; EDA1; EDA2; HED; HED1; ODT1; STHAGX1; TNLG7C; XHED; XLHED
Locus ID:	1896
UniProt ID:	<u>Q92838</u>



[View online »](#)

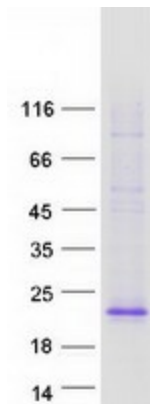
Cytogenetics: Xq13.1

Summary: The protein encoded by this gene is a type II membrane protein that can be cleaved by furin to produce a secreted form. The encoded protein, which belongs to the tumor necrosis factor family, acts as a homotrimer and may be involved in cell-cell signaling during the development of ectodermal organs. Defects in this gene are a cause of ectodermal dysplasia, anhidrotic, which is also known as X-linked hypohidrotic ectodermal dysplasia. Several transcript variants encoding many different isoforms have been found for this gene. [provided by RefSeq, Jul 2008]

Protein Families: Druggable Genome, Secreted Protein, Transmembrane

Protein Pathways: Cytokine-cytokine receptor interaction

Product images:



Coomassie blue staining of purified EDA protein (Cat# [TP315628]). The protein was produced from HEK293T cells transfected with EDA cDNA clone (Cat# [RC215628]) using MegaTran 2.0 (Cat# [TT210002]).