

## Product datasheet for PH315592

### TMS1 (PYCARD) (NM\_013258) Human Mass Spec Standard

#### Product data:

Product Type:	Mass Spec Standards
Description:	PYCARD MS Standard C13 and N15-labeled recombinant protein (NP_037390)
Species:	Human
Expression Host:	HEK293
Expression cDNA Clone or AA Sequence:	RC215592
Predicted MW:	21.4 kDa
Protein Sequence:	>RC215592 representing NM_013258 Red=Cloning site Green=Tags(s)  MGRARDAILDALLENLTAEELKKFKLKLKLSVPLREGYGRIPRGALLSMDALDLTDKLVSFYLETYGAELTANVLRDMGLQEMAGQLQAATHQGSGAAPAGIQAPPQSAAKPGLHFIDQHRAALIARVTNVEWLLDALYGKVLTDEQYQAVRAEPTNPSKMRKLFSTPAWNWTKDLLLQALRESQSYLVEDLERS  TRTRPLEQKLI SEEDLAANDILDYKDDDDKV
Tag:	C-Myc/DDK
Purity:	> 80% as determined by SDS-PAGE and Coomassie blue staining
Concentration:	>0.05 µg/µL as determined by microplate BCA method
Labeling Method:	Labeled with [U- 13C6, 15N4]-L-Arginine and [U- 13C6, 15N2]-L-Lysine
Buffer:	25 mM Tris-HCl, 100 mM glycine, pH 7.3
Storage:	Store at -80°C. Avoid repeated freeze-thaw cycles.
Stability:	Stable for 3 months from receipt of products under proper storage and handling conditions.
RefSeq:	<a href="#">NP_037390</a>
RefSeq Size:	936
RefSeq ORF:	585
Synonyms:	ASC; CARD5; TMS; TMS-1; TMS1
Locus ID:	29108
UniProt ID:	<a href="#">Q9ULZ3</a>



[View online »](#)

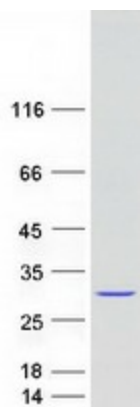
**Cytogenetics:** 16p11.2

**Summary:** This gene encodes an adaptor protein that is composed of two protein-protein interaction domains: a N-terminal PYRIN-PAAD-DAPIN domain (PYD) and a C-terminal caspase-recruitment domain (CARD). The PYD and CARD domains are members of the six-helix bundle death domain-fold superfamily that mediates assembly of large signaling complexes in the inflammatory and apoptotic signaling pathways via the activation of caspase. In normal cells, this protein is localized to the cytoplasm; however, in cells undergoing apoptosis, it forms ball-like aggregates near the nuclear periphery. Two transcript variants encoding different isoforms have been found for this gene. [provided by RefSeq, Jul 2008]

**Protein Families:** Druggable Genome

**Protein Pathways:** Cytosolic DNA-sensing pathway, NOD-like receptor signaling pathway

### Product images:



Coomassie blue staining of purified PYCARD protein (Cat# [TP315592]). The protein was produced from HEK293T cells transfected with PYCARD cDNA clone (Cat# [RC215592]) using MegaTran 2.0 (Cat# [TT210002]).