

Product datasheet for PH315566

Glutaredoxin 2 (GLRX2) (NM_016066) Human Mass Spec Standard

Product data:

Product Type:	Mass Spec Standards
Description:	GLRX2 MS Standard C13 and N15-labeled recombinant protein (NP_057150)
Species:	Human
Expression Host:	HEK293
Expression cDNA Clone or AA Sequence:	RC215566
Predicted MW:	18.5 kDa
Protein Sequence:	>RC215566 representing NM_016066 Red =Cloning site Green =Tags(s) MNPRDKQVSRFSPLKDVYTWVALAGIQRSGSPGRTRSAARRMESNTSSSLENLATAPVNQIQETISDNCV VIFSKTSCSYCTMAKKLFHDMNVNYKVVELDLLEYGNQFQDALYKMTGERTVPRIFVNGTFIGGATDTHR LHKEGKLLPLVHQCYLKKS KRKEFQ TR TRPLEQKLI SEEDLAANDILDYKDDDDKV
Tag:	C-Myc/DDK
Purity:	> 80% as determined by SDS-PAGE and Coomassie blue staining
Concentration:	>0.05 µg/µL as determined by microplate BCA method
Labeling Method:	Labeled with [U- ¹³ C ₆ , ¹⁵ N ₄]-L-Arginine and [U- ¹³ C ₆ , ¹⁵ N ₂]-L-Lysine
Buffer:	25 mM Tris-HCl, 100 mM glycine, pH 7.3
Storage:	Store at -80°C. Avoid repeated freeze-thaw cycles.
Stability:	Stable for 3 months from receipt of products under proper storage and handling conditions.
RefSeq:	NP_057150
RefSeq Size:	1170
RefSeq ORF:	495
Synonyms:	CGI-133; GRX2
Locus ID:	51022
UniProt ID:	Q9NS18



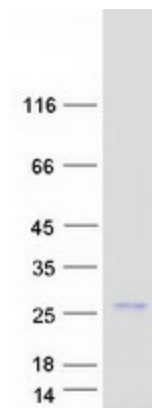
[View online »](#)

Cytogenetics: 1q31.2

Summary: The protein encoded by this gene is a member of the glutaredoxin family of proteins, which maintain cellular thiol homeostasis. These proteins are thiol-disulfide oxidoreductases that use a glutathione-binding site and one or two active cysteines in their active site. This gene undergoes alternative splicing to produce multiple isoforms, one of which is ubiquitously expressed and localizes to mitochondria, where it functions in mitochondrial redox homeostasis and is important for the protection against and recovery from oxidative stress. Other isoforms, which have more restrictive expression patterns, show cytosolic and nuclear localization, and are thought to function in cellular differentiation and transformation, possibly with a role in tumor progression. [provided by RefSeq, Aug 2011]

Protein Families: Transcription Factors

Product images:



Coomassie blue staining of purified GLRX2 protein (Cat# [TP315566]). The protein was produced from HEK293T cells transfected with GLRX2 cDNA clone (Cat# [RC215566]) using MegaTran 2.0 (Cat# [TT210002]).