

Product datasheet for PH315551

ZPLD1 (NM_175056) Human Mass Spec Standard

Product data:

Product Type:	Mass Spec Standards
Description:	ZPLD1 MS Standard C13 and N15-labeled recombinant protein (NP_778226)
Species:	Human
Expression Host:	HEK293
Expression cDNA Clone or AA Sequence:	RC215551
Predicted MW:	47.2 kDa
Protein Sequence:	>RC215551 representing NM_175056 Red=Cloning site Green=Tags(s)

MMLRFSMCRGNDEGFAMEQIWLLLLLTIKRVLPQSAQFNGYNCANLHRSRFAERDISVYCGVQAITMKIN
FCTVLFSGYSETDLALNGRHGDSHCRGFINNNTFPAVVIFIIINLSTLEGCGNNLVVSTIPGVSAYGNATS
VQVGNISGYIDTPDPPTIISYLPGLLYKFSYPLEYLVNNTQLASSAAISVRENNGTFVSTLNLLLYN
DSTYNQQLIIPSIPLKTKVFAAVQATNLDGRWNVMDYCYTTPSGNPNDIRYDLFLSCDKDPQTTVI
ENGRSQRGRFSFEVFRFVKHKNQKMSTVFLHCVTKLCRADDPCFLMPICSHRERRDAGRRTTWSQPSSSG
SAVLSAGPIITRSDETPTNNSQLGSPMPFFQLNAITSALISGMVILGVTFSLLLCSLALLHRKGPTSL
VLNGIRNPVFD

TRTRPLEQKLISEEDLAANDILDYKDDDDKV

Tag:	C-Myc/DDK
Purity:	> 80% as determined by SDS-PAGE and Coomassie blue staining
Concentration:	>0.05 µg/µL as determined by microplate BCA method
Labeling Method:	Labeled with [U- ¹³ C ₆ , ¹⁵ N ₄]-L-Arginine and [U- ¹³ C ₆ , ¹⁵ N ₂]-L-Lysine
Buffer:	25 mM Tris-HCl, 100 mM glycine, pH 7.3
Storage:	Store at -80°C. Avoid repeated freeze-thaw cycles.
Stability:	Stable for 3 months from receipt of products under proper storage and handling conditions.
RefSeq:	<u>NP_778226</u>
RefSeq Size:	3639
RefSeq ORF:	1293
Locus ID:	131368



[View online »](#)

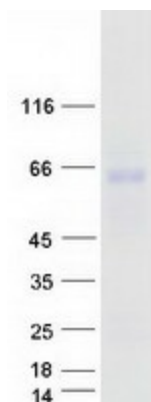
UniProt ID: [Q8TCW7](#)

Cytogenetics: 3q12.3

Summary: Glycoprotein which is a component of the gelatinous extracellular matrix in the cupulae of the vestibular organ.[UniProtKB/Swiss-Prot Function]

Protein Families: Transmembrane

Product images:



Coomassie blue staining of purified ZPLD1 protein (Cat# [TP315551]). The protein was produced from HEK293T cells transfected with ZPLD1 cDNA clone (Cat# [RC215551]) using MegaTran 2.0 (Cat# [TT210002]).