

## Product datasheet for PH315550

### Hephaestin (HEPH) (NM\_138737) Human Mass Spec Standard

#### Product data:

Product Type:	Mass Spec Standards
Description:	HEPH MS Standard C13 and N15-labeled recombinant protein (NP_620074)
Species:	Human
Expression Host:	HEK293
Expression cDNA Clone or AA Sequence:	RC215550
Predicted MW:	136.5 kDa
Protein Sequence:	>RC215550 representing NM_138737 Red=Cloning site Green=Tags(s)

MESGHLWALLFMQSLWPQLTDGATRVYYLGIRDVQWNYAPKGRNVITNQPLDSDIVASSFLKSDKNRIG  
 GTYKKTIIKEYKDDSYTDEVAQPAWLGFLGPVLQAEVGDVILIHLKNFATRPYTIHPHG VFYEK DSEGS  
 YPDGSSGPLKADDSVPPGGSHIYNWTIPEGHPTDADPACLTWIYHSHVDAPRDIATGLIGPLITCKRGA  
 LDGNSPPQRQDQVDHDFLLFSVVDENLSWHLNENIATYCSDPASVDKEDETFQESNRMHAINGFVFNLP  
 ELNMCQKRVAVHLFGMGNEIDVHTAFFHGQMLTTRGHHTDVANIFPATFVTAEMVPWEPGTWLISCQVN  
 SHFRDGMQALYKVKSCSMAPPVDLLTGKVRQYFIEAHEIQWDYGPMDGSGTGKNLREPGISDKFFQKS  
 SSRIGGTYYKVRVEAFQDETFQEKMHLEEDRHLGILGPVIRAEVGDITQVVFYNRASQPF SMQPHGVFYE  
 KDYEGTVYNDGSSYPGLVAKPF EKVTYRWTVPPHAGPTAQDPACLTWMYFSAADPIRDTNSGLVGPLLVC  
 RAGALGADGKQKGVDFEFLLFTVLDENKSWYSNANQAAAMLD FRLLEDIEGFQDSNRMHAINGFLFSN  
 LPRLD MCKGDTVAWHLGLGTE TDVHGVMFQGNVQLQGMKGAAMLFPHTFVMAIMQPNLGTFEIYQC  
 AGSHREAGMRAIYNVSQCPGHQATPRQRYQAARIYYIMAEVEWYDPCDRS WEREWHNQSEKDSYGYIFL  
 SNKDGLLSRYKKA VFREYTDGTFRI PRPTGPEEHLGILGPLIKGEVGDILT VVFKNNASRPYSVHAHG  
 VLESTTVWPLAAEPGEVVTYQWNIPERSGPGPND SACSWSIYSAVDPIKDMYSGLVGPLAICQK GILEP  
 HGGRSMDREFALLFLIFDENKSWYLEENVATHGSQDPSINLQDETFLESNMHAINGKLYANLRGLTM  
 YQGERVAWYMLAMQDQVDLHTIHFHAESFLYRNGENYRADVVDLFPGT FEVVMVASNP GTWLMHCHVTD  
 HVHAGMETLFTVFSRTEHLSPLTVITKETE KAVPPRDIEEGNVKMLGMQIPIKNVEMLASVLVAISVTL  
 LVVLALGGVVWYQHRQRKLRNRRSILDDSFKLLSFKQ

TRTRPLEQKLI SEEDLAANDILDYKDDDDKV

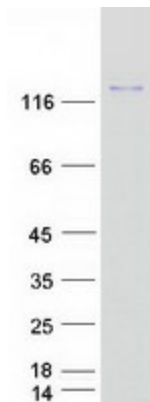
Tag:	C-Myc/DDK
Purity:	> 80% as determined by SDS-PAGE and Coomassie blue staining
Concentration:	>0.05 µg/µL as determined by microplate BCA method
Labeling Method:	Labeled with [U- <sup>13</sup> C <sub>6</sub> , <sup>15</sup> N <sub>4</sub> ]-L-Arginine and [U- <sup>13</sup> C <sub>6</sub> , <sup>15</sup> N <sub>2</sub> ]-L-Lysine
Buffer:	25 mM Tris-HCl, 100 mM glycine, pH 7.3



[View online >](#)

<b>Storage:</b>	Store at -80°C. Avoid repeated freeze-thaw cycles.
<b>Stability:</b>	Stable for 3 months from receipt of products under proper storage and handling conditions.
<b>RefSeq:</b>	<a href="#">NP_620074</a>
<b>RefSeq Size:</b>	4279
<b>RefSeq ORF:</b>	3474
<b>Synonyms:</b>	CPL
<b>Locus ID:</b>	9843
<b>UniProt ID:</b>	<a href="#">Q9BQS7</a>
<b>Cytogenetics:</b>	Xq12
<b>Summary:</b>	This gene encodes a member of the multicopper oxidase protein family. The encoded protein is involved in the transport of dietary iron from epithelial cells of the intestinal lumen into the circulatory system, and may be involved in copper transport and homeostasis. In mouse, defects in this gene can lead to severe microcytic anemia. Alternative splicing results in multiple transcript variants. [provided by RefSeq, Aug 2013]
<b>Protein Families:</b>	Druggable Genome, Transmembrane

### Product images:



Coomassie blue staining of purified HEPH protein (Cat# [TP315550]). The protein was produced from HEK293T cells transfected with HEPH cDNA clone (Cat# [RC215550]) using MegaTran 2.0 (Cat# [TT210002]).