

Product datasheet for PH315455

ENAH (NM_018212) Human Mass Spec Standard

Product data:

| | |
|---------------------------------------|--|
| Product Type: | Mass Spec Standards |
| Description: | ENAH MS Standard C13 and N15-labeled recombinant protein (NP_060682) |
| Species: | Human |
| Expression Host: | HEK293 |
| Expression cDNA Clone or AA Sequence: | RC215455 |
| Predicted MW: | 63.7 kDa |
| Protein Sequence: | >RC215455 representing NM_018212 Red=Cloning site Green=Tags(s) |

MSEQSICQARAAMVYDDANKKWVPAGGSTGFSRVHIYHHTGNNTFRVVGSRKIQDQVIVINCAIPKGLKY
NQATQTFHQWRDARQVYGLNFGSKEDANVFASAMMHALEVLNSQETGPTLPRQNSQLPAQVQNGPSQEEL
EIQRRQLQEQQRQKELERERLERERERERLERERLERERLEQEQLERERQERERQERLERQERL
ERQERLERQERLDRERQERQERERLERERERQERERQERERQERERQERERQERERERRISSAAAPASVETPLNSV
LGDSSASEPGLQASQAETPSQQGIVLGPLAPPPPPPLPPGPAQASVALPPPPGPPPPPLPSTGPPPP
PPPPPLPNQVPPPPPPPPAPPLPASGFFLASMSEDNRPLTGLAAAIAGAKLRKVSRLMEDTSFSPGGNAIG
VNSASSKTDTRGNGPLPLGGSGLEEMESALLARRRRIAEKGSTIETEQKEDKGEDSEPVTSKASSTSTP
EPTRKPWERTNTMNGSKSPVISRPKSTPLSQPSANGVQTEGLDYDRLKQDILDENMRKELTKLKEELIDAI
RQELSKSNTA

TRTRPLEQKLISEEDLAANDILDYKDDDDKV

| | |
|------------------|--|
| Tag: | C-Myc/DDK |
| Purity: | > 80% as determined by SDS-PAGE and Coomassie blue staining |
| Concentration: | >0.05 µg/µL as determined by microplate BCA method |
| Labeling Method: | Labeled with [U- 13C6, 15N4]-L-Arginine and [U- 13C6, 15N2]-L-Lysine |
| Buffer: | 25 mM Tris-HCl, 100 mM glycine, pH 7.3 |
| Storage: | Store at -80°C. Avoid repeated freeze-thaw cycles. |
| Stability: | Stable for 3 months from receipt of products under proper storage and handling conditions. |
| RefSeq: | <u>NP_060682</u> |
| RefSeq Size: | 13109 |
| RefSeq ORF: | 1710 |



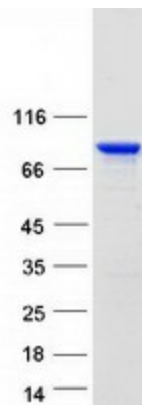
[View online »](#)

Synonyms: ENA; MENA; NDPP1
Locus ID: 55740
UniProt ID: [Q8N8S7](#), [A0A4D6J698](#)
Cytogenetics: 1q42.12

Summary: This gene encodes a member of the enabled/ vasodilator-stimulated phosphoprotein. Members of this gene family are involved in actin-based motility. This protein is involved in regulating the assembly of actin filaments and modulates cell adhesion and motility. Alternate splice variants of this gene have been correlated with tumor invasiveness in certain tissues and these variants may serve as prognostic markers. A pseudogene of this gene is found on chromosome 3. [provided by RefSeq, Sep 2016]

Protein Pathways: Regulation of actin cytoskeleton

Product images:



Coomassie blue staining of purified ENAH protein (Cat# [TP315455]). The protein was produced from HEK293T cells transfected with ENAH cDNA clone (Cat# [RC215455]) using MegaTran 2.0 (Cat# [TT210002]).