

Product datasheet for PH315442

Syntenin (SDCBP) (NM_001007068) Human Mass Spec Standard

Product data:

| | |
|---------------------------------------|--|
| Product Type: | Mass Spec Standards |
| Description: | SDCBP MS Standard C13 and N15-labeled recombinant protein (NP_001007069) |
| Species: | Human |
| Expression Host: | HEK293 |
| Expression cDNA Clone or AA Sequence: | RC215442 |
| Predicted MW: | 31.6 kDa |
| Protein Sequence: | >RC215442 representing NM_001007068 Red=Cloning site Green=Tags(s) MSLYPSLEDLKAQTAFSANPANPAILSEASAPIPHDGNLYPRLYPELSQYMGLSLNEEIRANVAVVSGA PLQQQLVARPSSINYMVAPVTGNDVGIRRAEIKQGIREVILCKDQDGKIGRLKSIDNGIFVQLVQANS ASLVGLRFGDQVLQINGENCAGWSSDKAHKVLKQAFGEKITMTIRDRPFERTITMHDSTGHVGFIFKNG KITSIVKDSSAARNGLLTEHNICEINGQNVIGLKDSQIADILSTSGTVVTITIMPAFIFEHIKRMPSI MKSLMDHTIPEV TRTRPLEQKLISEEDLAANDILDYKDDDDKV |
| Tag: | C-Myc/DDK |
| Purity: | > 80% as determined by SDS-PAGE and Coomassie blue staining |
| Concentration: | >0.05 µg/µL as determined by microplate BCA method |
| Labeling Method: | Labeled with [U- ¹³ C ₆ , ¹⁵ N ₄]-L-Arginine and [U- ¹³ C ₆ , ¹⁵ N ₂]-L-Lysine |
| Buffer: | 25 mM Tris-HCl, 100 mM glycine, pH 7.3 |
| Storage: | Store at -80°C. Avoid repeated freeze-thaw cycles. |
| Stability: | Stable for 3 months from receipt of products under proper storage and handling conditions. |
| RefSeq: | <u>NP_001007069</u> |
| RefSeq Size: | 2155 |
| RefSeq ORF: | 876 |
| Synonyms: | MDA-9; MDA9; ST1; SYCL; TACIP18 |
| Locus ID: | 6386 |



[View online »](#)

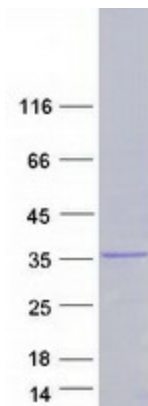
UniProt ID: [O00560](#)

Cytogenetics: 8q12.1

Summary: The protein encoded by this gene was initially identified as a molecule linking syndecan-mediated signaling to the cytoskeleton. The syntenin protein contains tandemly repeated PDZ domains that bind the cytoplasmic, C-terminal domains of a variety of transmembrane proteins. This protein may also affect cytoskeletal-membrane organization, cell adhesion, protein trafficking, and the activation of transcription factors. The protein is primarily localized to membrane-associated adherens junctions and focal adhesions but is also found at the endoplasmic reticulum and nucleus. Alternative splicing results in multiple transcript variants encoding different isoforms. Related pseudogenes have been identified on multiple chromosomes. [provided by RefSeq, Jan 2017]

Protein Families: Druggable Genome, Transmembrane

Product images:



Coomassie blue staining of purified SDCBP protein (Cat# [TP315442]). The protein was produced from HEK293T cells transfected with SDCBP cDNA clone (Cat# [RC215442]) using MegaTran 2.0 (Cat# [TT210002]).